



# INVICTUS

DELTA MARINE

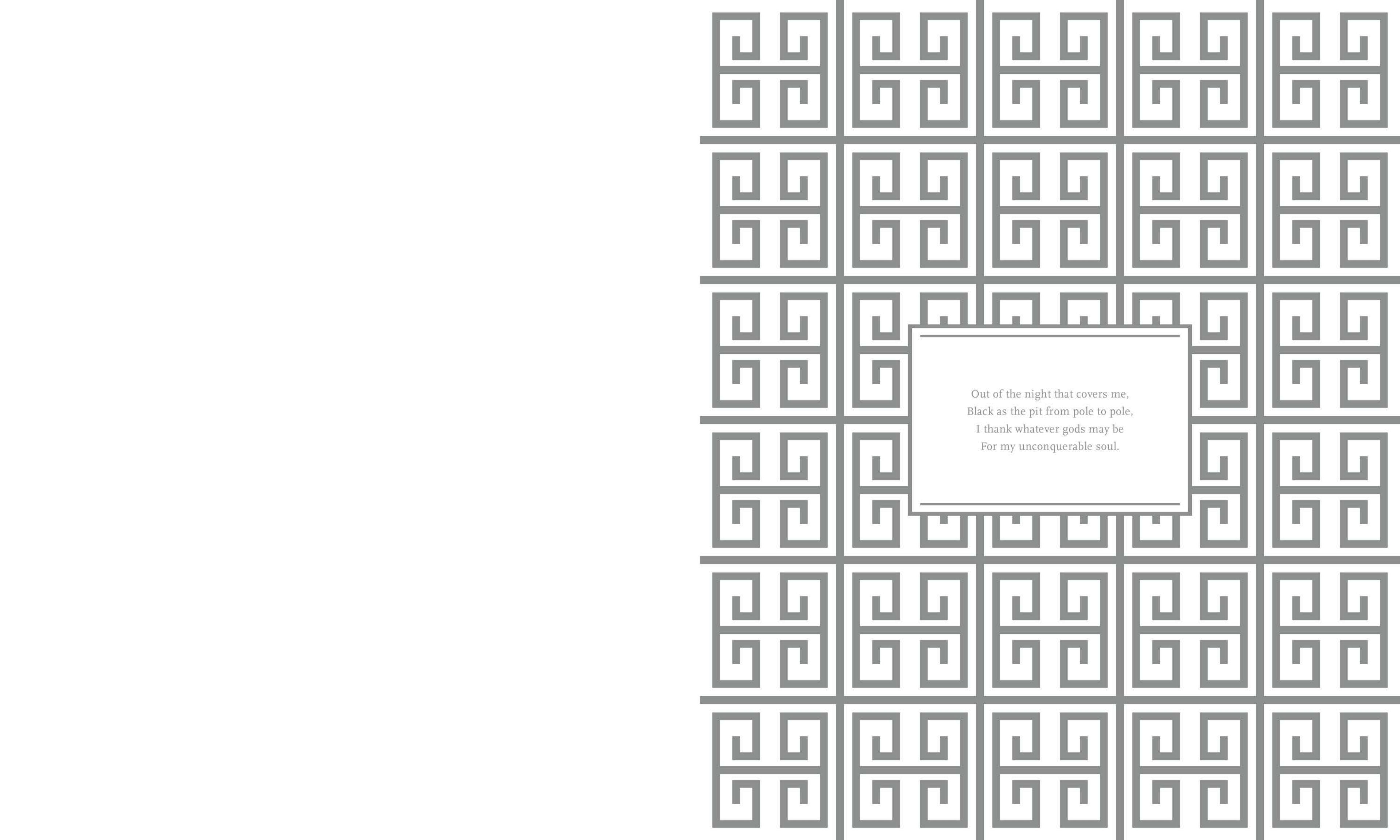
*66*  
*meters*



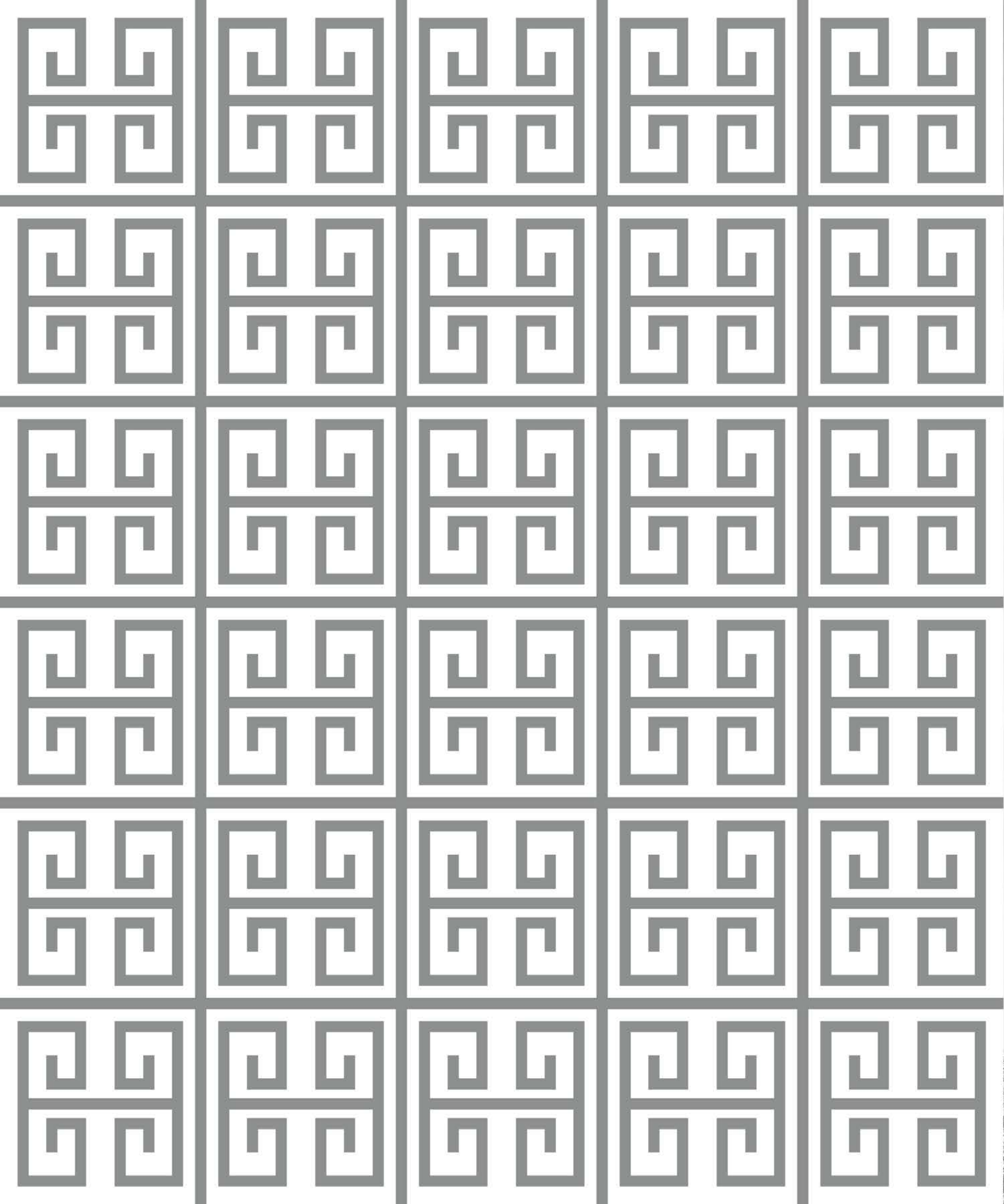
*I am the master of my fate:  
I am the captain of my soul.*

**INVICTUS**

UNCONQUERABLE



Out of the night that covers me,  
Black as the pit from pole to pole,  
I thank whatever gods may be  
For my unconquerable soul.





# INVICTUS

*Strikingly beautiful. Flawlessly conceived. Profoundly powerful.*

Impressive in size and mighty in stature, Delta's elegant 66-meter yacht *Invictus* boldly embodies the courage and strength portrayed in the final stanza of the eponymous poem by William Ernest Henley: "I am the master of my fate: I am the captain of my soul." At over 1,900 gross ITC and with a 43' beam, *Invictus* is a masterwork of design balance, cutting a graceful silhouette of exquisite lines, sculptural shapes, and accelerating curves. The foundation for Delta Design Group's innovative naval architecture is an ice-strengthened steel hull with composite superstructure. Utilizing finite element analysis and advanced engineering, they incorporated composite materials, steel, and aluminum into the construction, allowing for the best material to be chosen for each application. This efficient approach enabled Delta's designers to create interiors palatial in feeling, with high ceilings and expansive windows—one of many brilliant facets of the owners' desires that the Delta team transformed into a stunning reality.





*Invictus' remarkable scale is evident in her gorgeous polished stainless steel oval handrails that measure nearly five inches in circumference, and the prominent art deco-inspired flagstaff that stands five feet tall.*

## MASTER OF THE SEA

TONNAGE  
—  
1,943 ITC





43'

BEAM

*Invictus makes a commanding impression with her expansive beam and tonnage, yet maintains an elegant profile*

**A BEAUTY DEEP  
AND TIMELESS,  
IMMENSE IN SIZE  
AND POSSIBILITY**

DECKS





*On the decks, the style and grandeur of the interior and exterior areas meld seamlessly, with striking details throughout the plentiful outdoor spaces.*

## DECKS

The decks on *Invictus* are equally as grand as her interiors. The expansive sun deck—built of carbon fiber and composites to save weight and allow for beautifully sculpted shapes and curves—includes a spa pool, a chic wet bar with rich metallic painted stainless steel inlays and gleaming glass tiles, and more places to relax than one can count. Each level offers customizable spaces and furniture that can be easily configured whether you're setting the stage for an intimate gathering and tranquil sun-worshipping, or grand-scale entertaining. Splashing in the ocean is pure enjoyment on the fold-down beach cabana — it's the perfect place to jump on jet skis and tenders and play with water toys.







In the fell clutch of circumstance  
I have not winced nor cried aloud.  
Under the bludgeonings of chance  
My head is bloody, but unbowed.





# GRAND ENTRANCE

*With family living at the heart of the owners' design brief, Invictus brilliantly combines luxury and beauty with comfort and hospitality.*

Breathtaking from stem to stern, *Invictus'* design work is truly an original masterpiece. Diane Johnson Design, along with Johnson, Wen, Mulder Architecture, was tasked to create something new in yacht interior design, and her creation is a profound success. The result is a work of art that defies description, incorporating both traditional and modern influences that create a cool sophistication that's equally warm and welcoming. Elements of this original design are seen throughout the rooms and common areas, as witnessed in the intricate detailing of the balustrade that wraps around the dramatic entryway staircase, and the use of custom-made furniture more reminiscent of an estate than a yacht. However, every touch-point reflects the classical, clean, and timeless vision and tastes of the owners and their family, bringing to life a dream and a vision that can only be realized in true custom yacht building.



22 seat  
dining table





*A home on the water, resplendent with glorious entertaining spaces and intimate settees and lounges.*

## GATHER

Beauty is the main idea throughout *Invictus* interiors. The main salon is breathtaking, with a 9-foot ceiling and a 180-degree view of the surroundings. A grand piano sits unassumingly amongst a mixture of custom furniture perfect for small or large gatherings. On a separate deck, the dining salon is framed by curved sliding glass doors; its expandable table can seat more than 20 guests. Hallmarks throughout include different combinations of exotic wood species with intricate veneer patterns, a gorgeous use of rare Italian marble researched in Florence by the interior design team, and fabulous custom Lalique glasswork. Overall, *Invictus* is a harmonious mix of new and old, intimate but elegant, familiar yet completely original.







27

EXTRAORDINARY WORKS OF ART

*The owners' objets d'art are beautifully displayed among gorgeous antique furniture and fixtures*

**ARTISTRY WITNESSED  
IN EACH AND EVERY  
EXQUISITE DETAIL**

36  
rare woods  
& stone



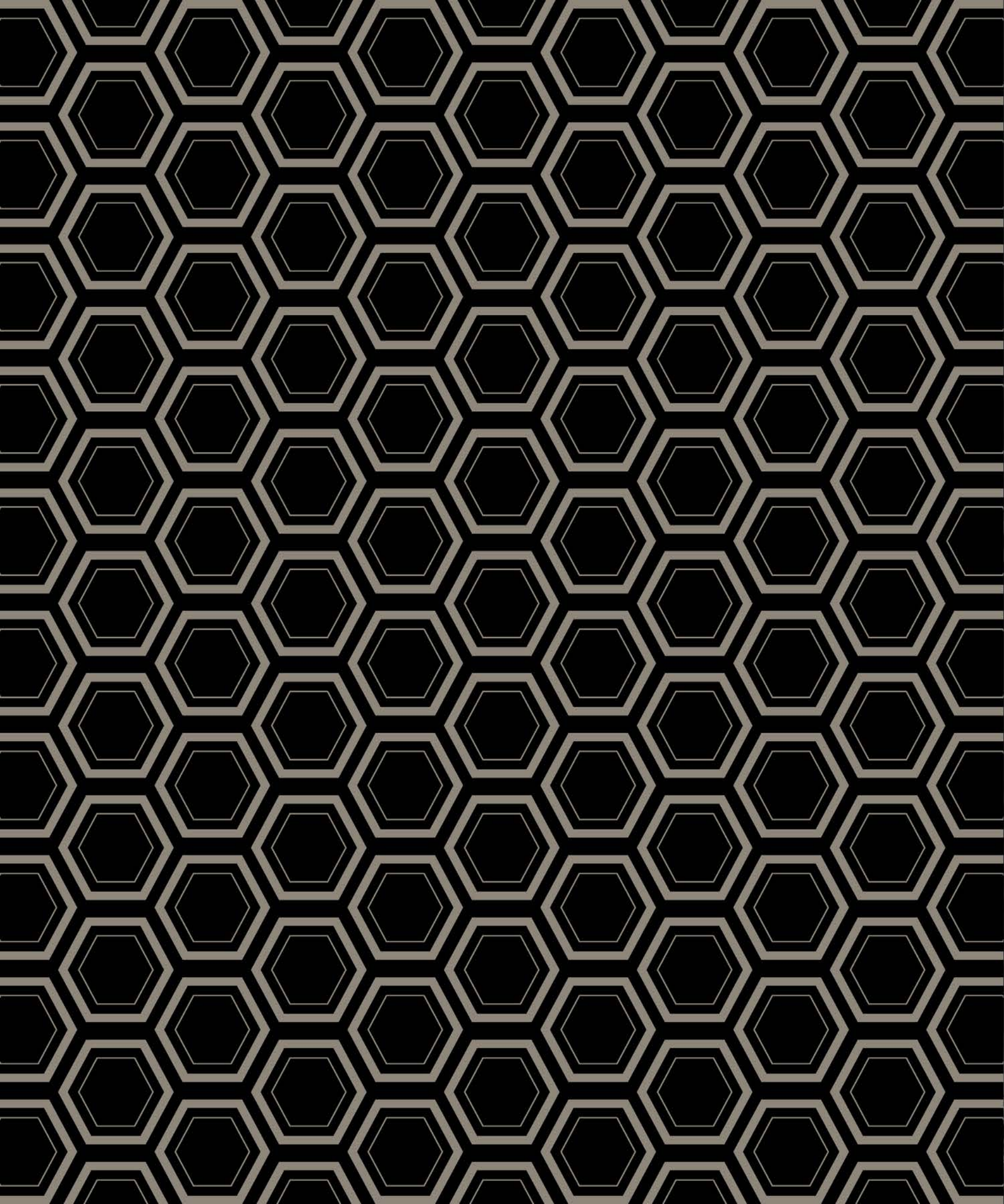
*Invictus is a work of art that transcends description, incorporating traditional and modern influences to create a cool sophistication—as seen in the whimsical nod to the Rat Pack era of the skylounge.*

**TRANSITIONAL DESIGN**





Beyond this place of wrath and tears  
Looms but the Horror of the shade,  
And yet the menace of the years  
Finds and shall find me unafraid.



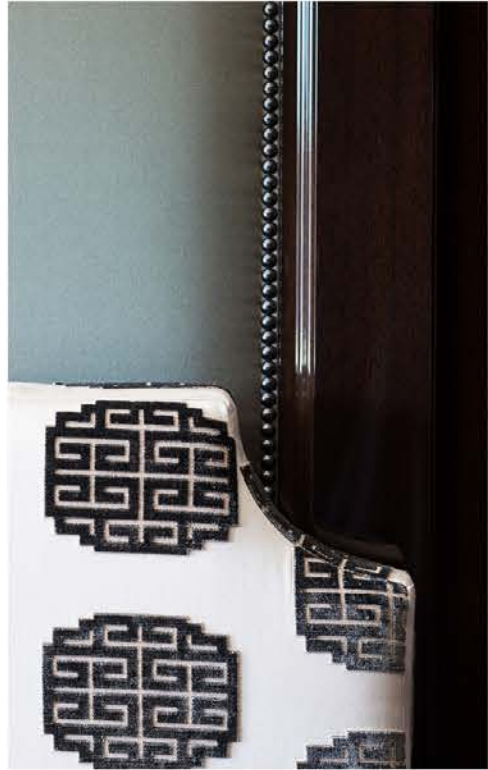




*Ocean breezes and picturesque views  
ignite your senses.*

## RENEW

Every space and detail has been superbly planned to provide the optimal experience on board. Her on-deck gym provides unparalleled inspiration for workouts, with sliding doors that open up to magnificent views. Located at the center of the main deck is a jewel for entertainment: a high-fidelity theater that boasts a 115-inch cinematic screen and raised stadium seating that comfortably hosts more than a dozen guests. Planning is paramount when it comes to entertaining; serving guests is made easier for the crew due in part to the thoughtfully designed service access areas on her many levels. Each deck features a large pantry, and the ingeniously conceived portside stairwell allows crew to move swiftly throughout her spaces unseen by guests.



9 FT  
ceilings

*Each stateroom is beautifully different, featuring an individualized design scheme. A skillful mix of pattern and texture in silk, velvet, and fine Italian cotton is strikingly cast against exotic woods and natural stone.*

**HIGHLY PERSONAL**



# 12<sup>th</sup> century

ITALIAN MARBLE

*The Tuscan marble floor designs are made from extremely rare stone researched and sourced from Florence*

**FINELY DETAILED  
CRAFTSMANSHIP  
RICH WITH HISTORY**

GUEST

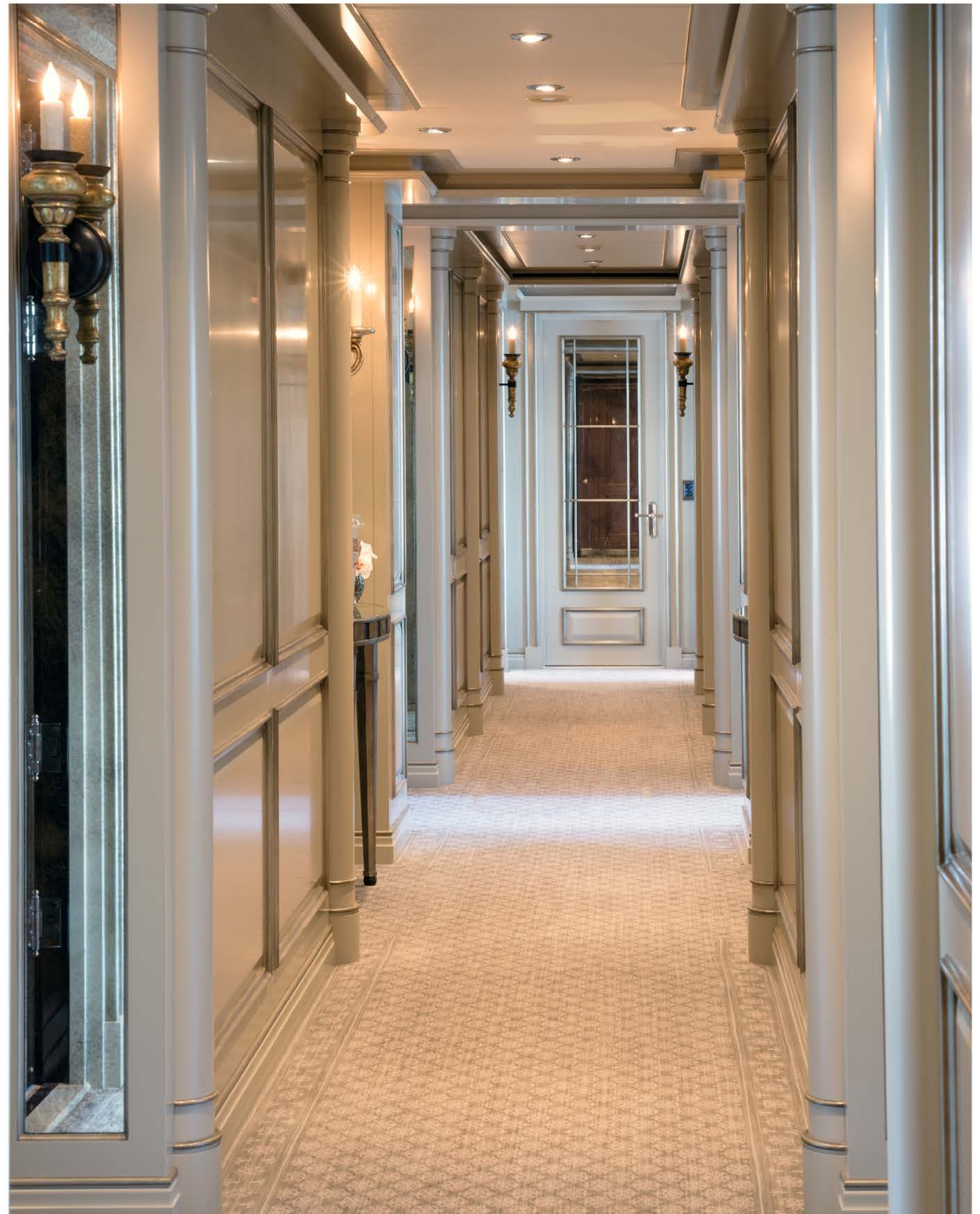




Guests are ensconced in luxury in their private staterooms, with gorgeous en suite heads and oversized windows to enjoy the glorious outdoor views.

## HAVEN

Each stateroom on *Invictus* is a feast for the senses. A stylish use of leather from Keleen Leather is found on furniture, doors, and even walls, to add to the richness of the surroundings. Instead of built-in furniture often found in yacht interiors, *Invictus* features a great deal of custom-designed residential furniture handcrafted from the showrooms of Therien Studio Workshop, Nancy Corzine, and Panache, among others. And as part of the beauty of the décor, throughout her rooms guests enjoy the owners' outstanding art collection and vintage treasures. The overall affect is warm, inviting, and comfortable while being a lavish personal retreat.





*184 m<sup>2</sup>*

MASTER SUITE

*Handsome from every perspective, and highly luxurious, the master suite has expansive room to relax, recharge, and rejuvenate*

**A PERSONAL RETREAT  
UNEQUALED IN  
COMFORT, PRIVACY,  
AND LUXURY**



*180° views* }



*Surrounded by beauty as far as the eye can see, the open plan design includes a 180-degree view with expansive windows, private sitting area, and king-size berth.*

## AN EXALTED SANCTUARY







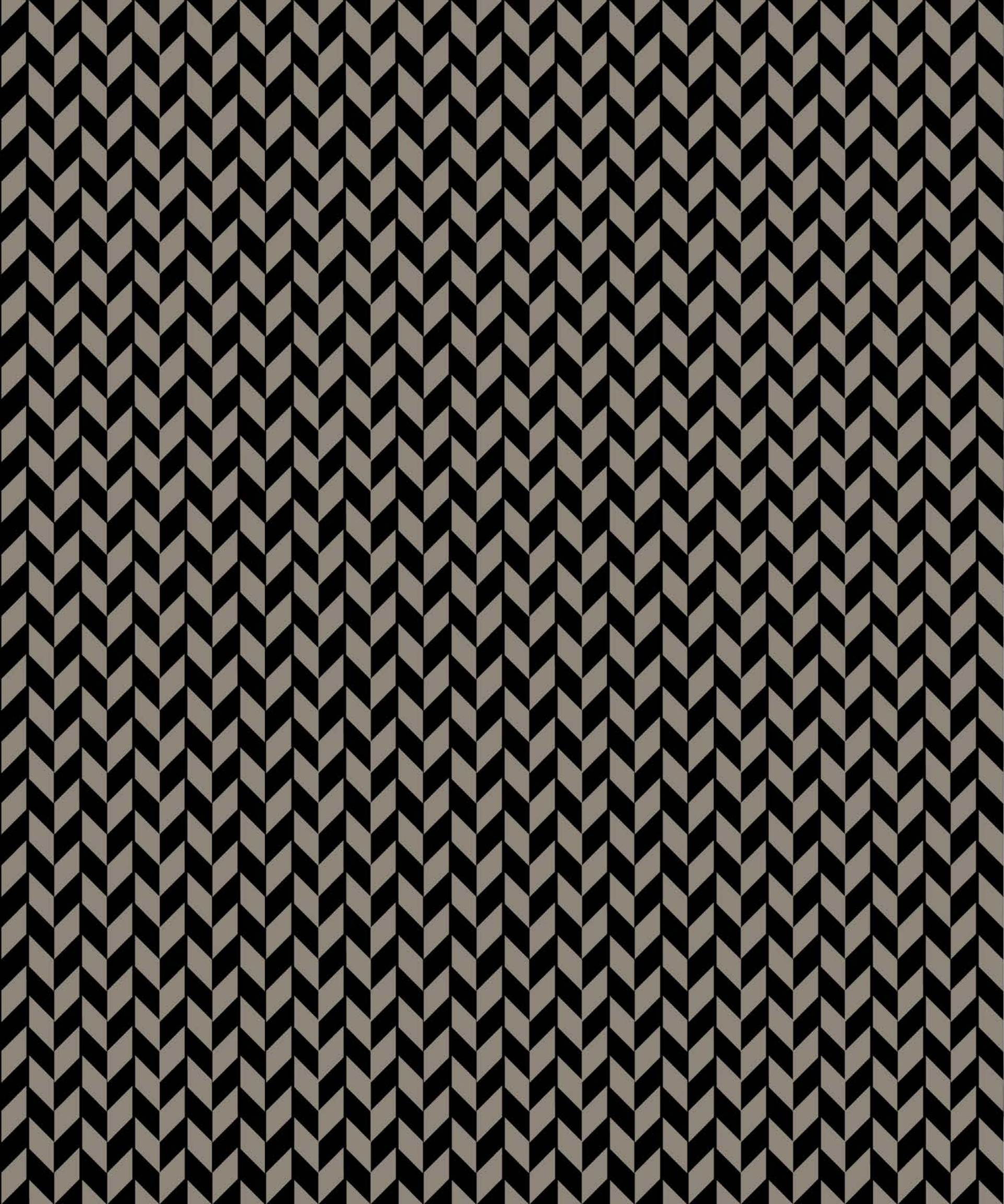
## PALATIAL

*The owners' suite is spacious in accommodation, with stunning views—including two lavish his and hers heads with private decks that make each a personal spa getaway.*

Enter the owners' private quarters, and you've crossed the threshold into an incomparably rarified sanctuary. The mahogany foyer and hallway lined with Lalique chandeliers echoes the feeling of the main entrance, and leads to an elegant private study with rich engraved black walls and built-in bookcases, accented by sumptuous red velvet furnishings. Step further inside the master stateroom and the 180-degree view of the ocean, emphasized by floor-to-ceiling hull-side windows, provides a serene backdrop to a space appointed with every possible comfort. Adjacent to the main room, two distinctly different and luxurious his and hers heads perfectly capture the essence of the owners' personalities, and open up to separate private decks.



It matters not how strait the gate,  
How charged with punishments the scroll,  
I am the master of my fate:  
I am the captain of my soul.



METRO







*Designed for life-changing journeys to even the world's most remote locations.*

## POWERFUL

*Invictus* crew and mechanical spaces feature a truly impressive level of attention to detail and high finish. Crew service and accessibility was a high priority, which is especially evident on the tank level with individual access rooms for stabilizers, air handling, fire protection system, and more. Powered by twin Caterpillar 3516 main engines and carrying over 50,000 gallons of fuel, the yacht has a 6,000 nautical mile range at 12 knots and a maximum speed of 17.5 knots. Quantum Zero Speed stabilizers and a Schotel bow thruster ensure maneuverability and a nice gentle ride both at anchor and underway. Her tender garage with side-hull doors and overhead gantry cranes stows a custom 28' Comitti and a Novurania Chase.

# INVICTUS

## SPECIFICATIONS

LOA	216' / 66 M
LWL	191' / 58.2 M
BEAM	43' / 13.1 M (EXTREME)
DRAFT	12' 8" / 3.9 M (HALF LOAD)
DISPLACEMENT	1,426 LONG TONS (HALF LOAD)
GROSS TONNAGE	1,943 ITC
ENGINES	2 X CAT 3516B HD DITTA 2,575 BHP @ 1,600 RPM
SPEED	17.5 KNOTS
CRUISE	16.1 KNOTS
FUEL CAPACITY	51,300 US GALLONS 194,000 LITERS
RANGE	7,000 NAUTICAL MILES @ 12 KNOTS
FRESH WATER CAPACITY	14,000 US GALLONS 53,000 LITERS
GENERATORS	(3) NORTHERN LIGHTS MI276A2.11 280 KW
STABILIZERS	QUANTUM QC-2200XT ZERO SPEED
CLASSIFICATION	LLOYD'S REGISTER 100 A1 SSC YACHT MONO G6 LMC UMS ICE CLASS 1D MCA/LARGE YACHT CODE (LY2)

SUPERSTRUCTURE MATERIAL  
COMPOSITE

HULL MATERIAL  
STEEL

OWNER AND GUESTS  
12

CREW  
22

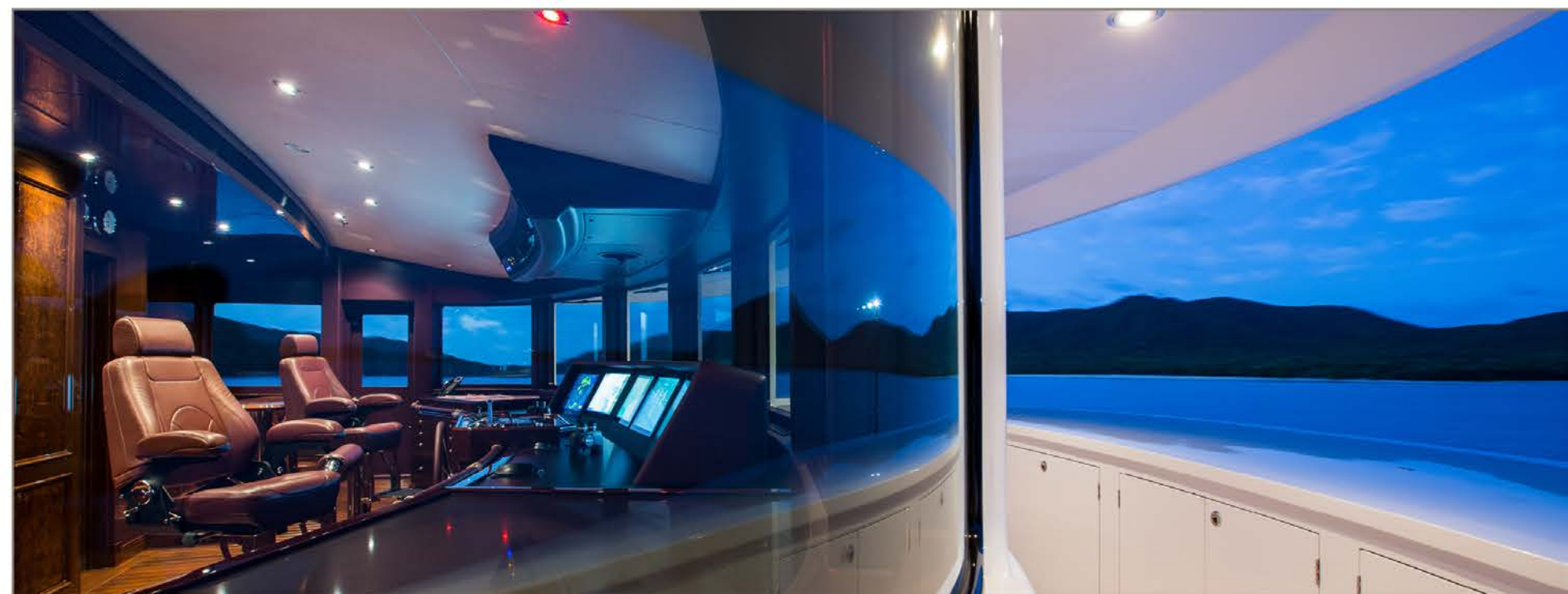
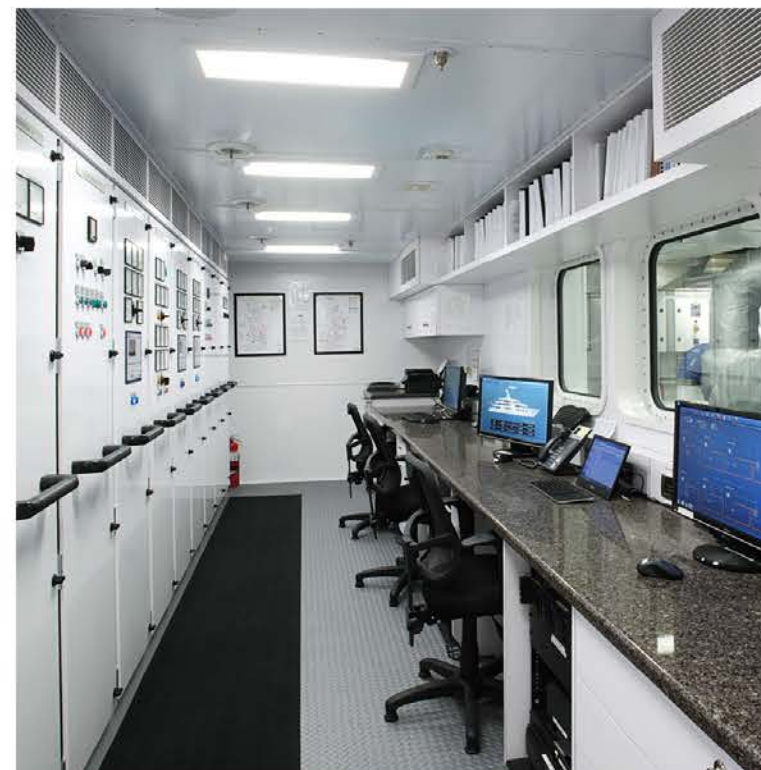
NAVAL ARCHITECTURE  
DELTA DESIGN GROUP

EXTERIOR STYLING  
DELTA DESIGN GROUP

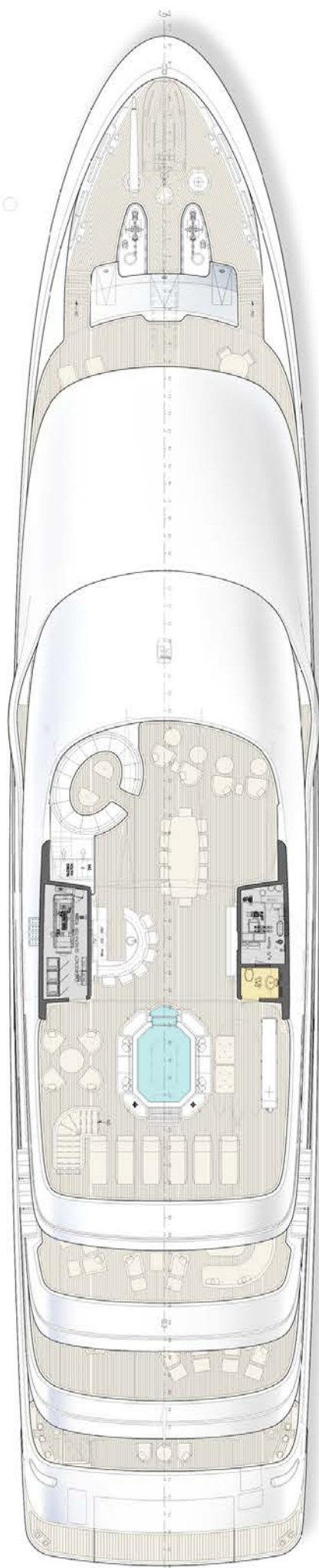
INTERIOR SPACE PLANNING  
DELTA DESIGN GROUP

INTERIOR DESIGN  
DIANE JOHNSON DESIGN  
JOHNSON, WEN & MULDER ARCHITECTURE

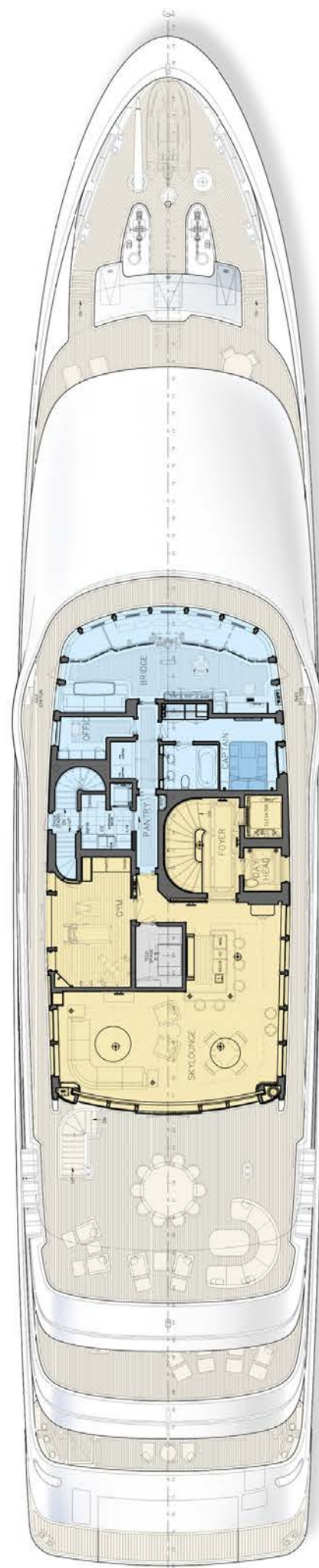
BUILDER / YEAR  
DELTA / 2013



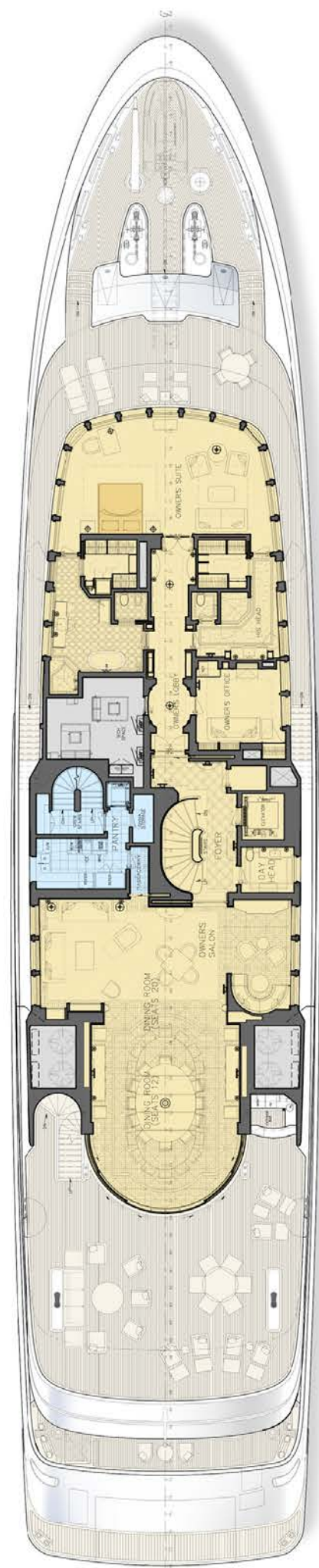




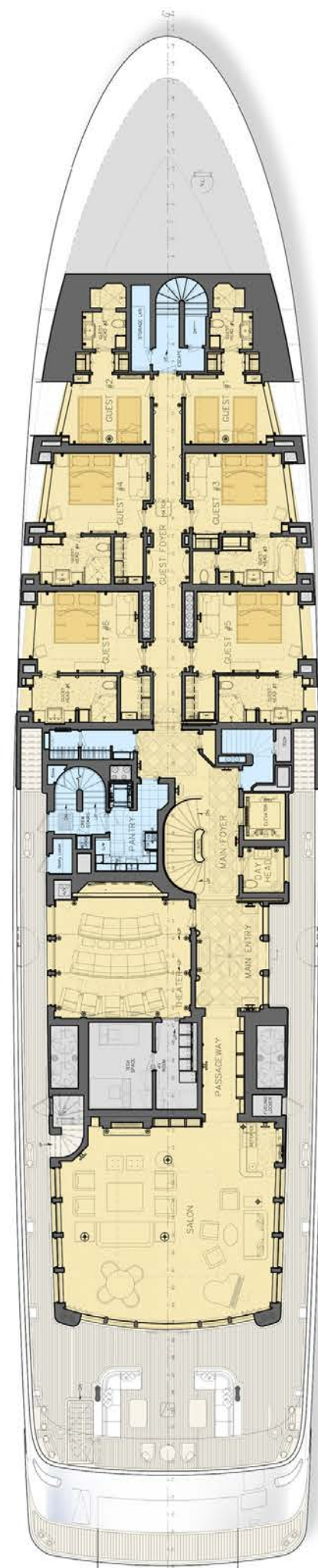
SUN DECK



BRIDGE DECK



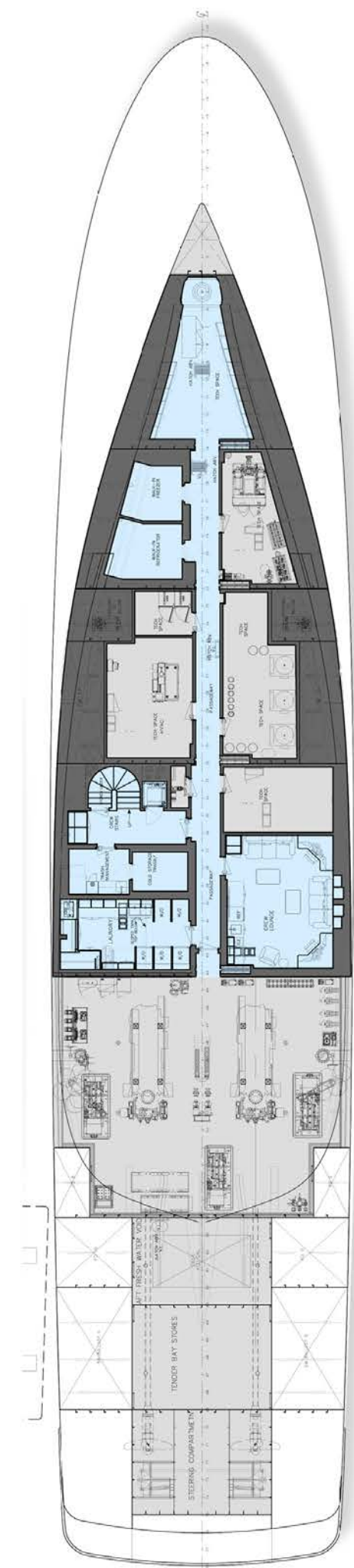
OWNERS' DECK



MAIN DECK



LOWER DECK



TANK DECK



Out of the night that covers me,  
Black as the pit from pole to pole,  
I thank whatever gods may be  
For my unconquerable soul.

In the fell clutch of circumstance  
I have not winced nor cried aloud.  
Under the bludgeonings of chance  
My head is bloody, but unbowed.

Beyond this place of wrath and tears  
Looms but the Horror of the shade,  
And yet the menace of the years  
Finds and shall find me unafraid.

It matters not how strait the gate,  
How charged with punishments the scroll,  
I am the master of my fate:  
I am the captain of my soul.

WILLIAM ERNEST HENLEY

