



LAUREL

INSPIRING BRILLIANCE

LAUREL
BY DELTA MARINE



INTRO

INSPIRING BRILLIANCE

As the largest yacht built in America in over 75 years, *Laurel* is sure to turn heads. Yet it's hard to say what her most exceptional quality is. Perhaps you'll fall for her graceful, matchless profile. Get to know what's beneath the surface and you'll understand more about the stunning achievement she represents. But the truth is she is both a 240-foot work of art – and a tremendous engineering breakthrough. We invite you to discover *Laurel*, a stunning and history-making accomplishment from Delta.

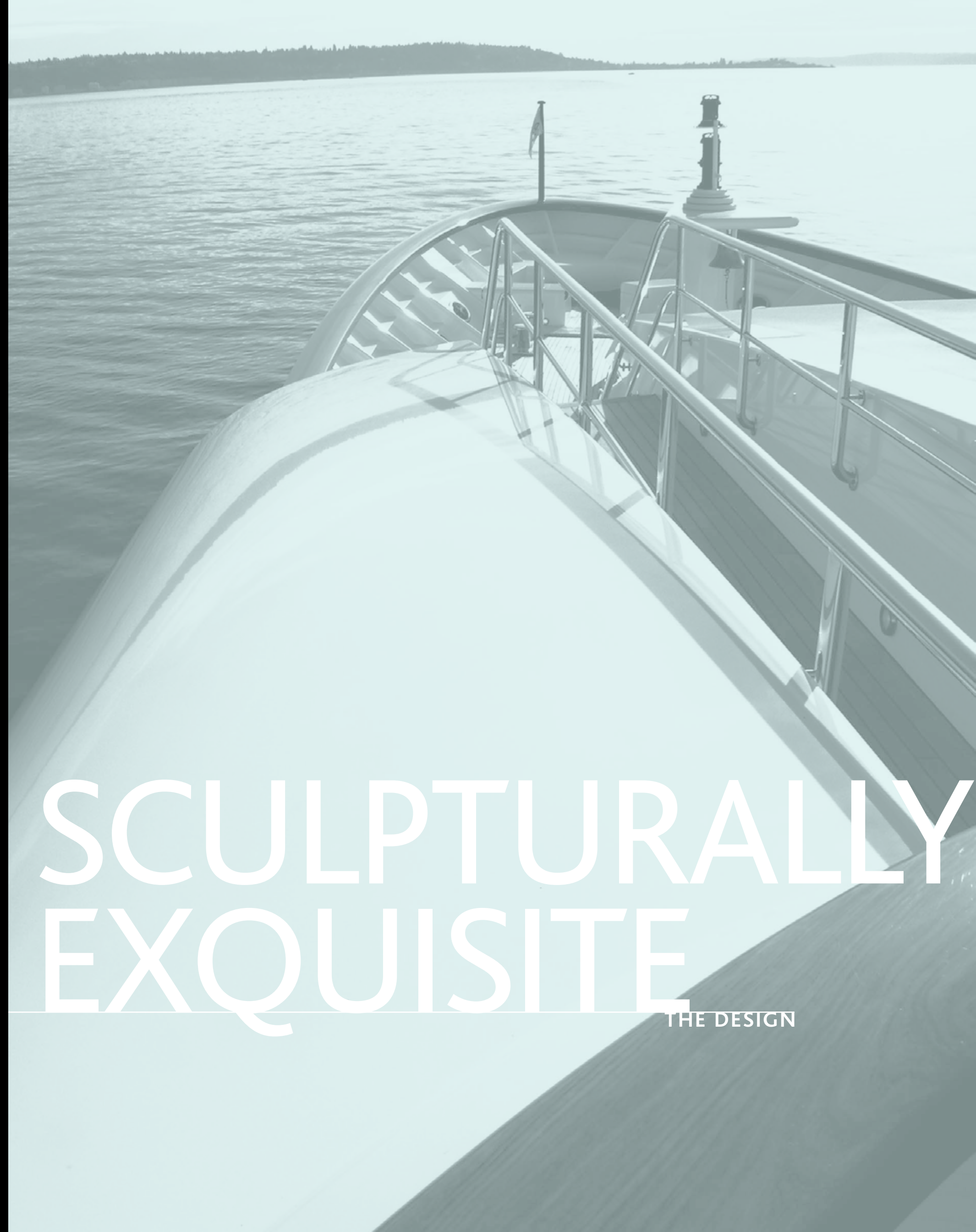




1
NO.

A HISTORICAL ACHIEVEMENT

Delta is proud to announce *Laurel*, a stunning achievement of elegance and performance. Designed by Donald Starkey Design with naval architecture and marine engineering by the Delta Design Group, *Laurel* is the largest custom yacht built in the United States in over 75 years. Her beautiful high-gloss royal blue hull is complemented by a white superstructure with moon dust accents and teak cap rail. Yet size and beauty alone are hardly her only defining exemplars; *Laurel* is a masterful work both from the perspective of her stunning profile and the engineering achievement she represents. This is the world's first large yacht to have an entirely composite superstructure from the main deck up. The design incorporated minimizing her deck-to-deck heights and lowering her profile to create a sleeker and tighter overall look. While she impresses all with her elegant entrance and refined stern, Delta utilized breakthrough hydrodynamics to invent a hull form that is remarkably fuel-efficient compared to similarly sized yachts. Advanced materials and cutting-edge technology put *Laurel* first in the new class of megayachts. The goal was to create a classically beautiful yacht that is performance-focused for maximum proficiency; no matter where she journeys *Laurel* is destined to beguile the world, and certainly, all who witness her firsthand.



SCULPTURALLY EXQUISITE

THE DESIGN



Laurel embraces the ageless style of a proper gentlemen's yacht as well as the spirit of American innovation. Her profile, with a long, fine entry and a gracefully shaped stern, belies the efficient underbody concealed beneath the waterline.







Carrying over their belief that it is better to spend the weight budget on structure rather than fairing compound, Delta carefully engineered the robust shell plating and framing system to produce a remarkably fair surface with an absolute minimum of weld distortion.

As the industry leader in applying composite technologies, Delta constructed a purely composite superstructure to provide weight savings and reduce maintenance.





Her steel hull and composite superstructure combine the best of today's most advanced materials and manufacturing processes.

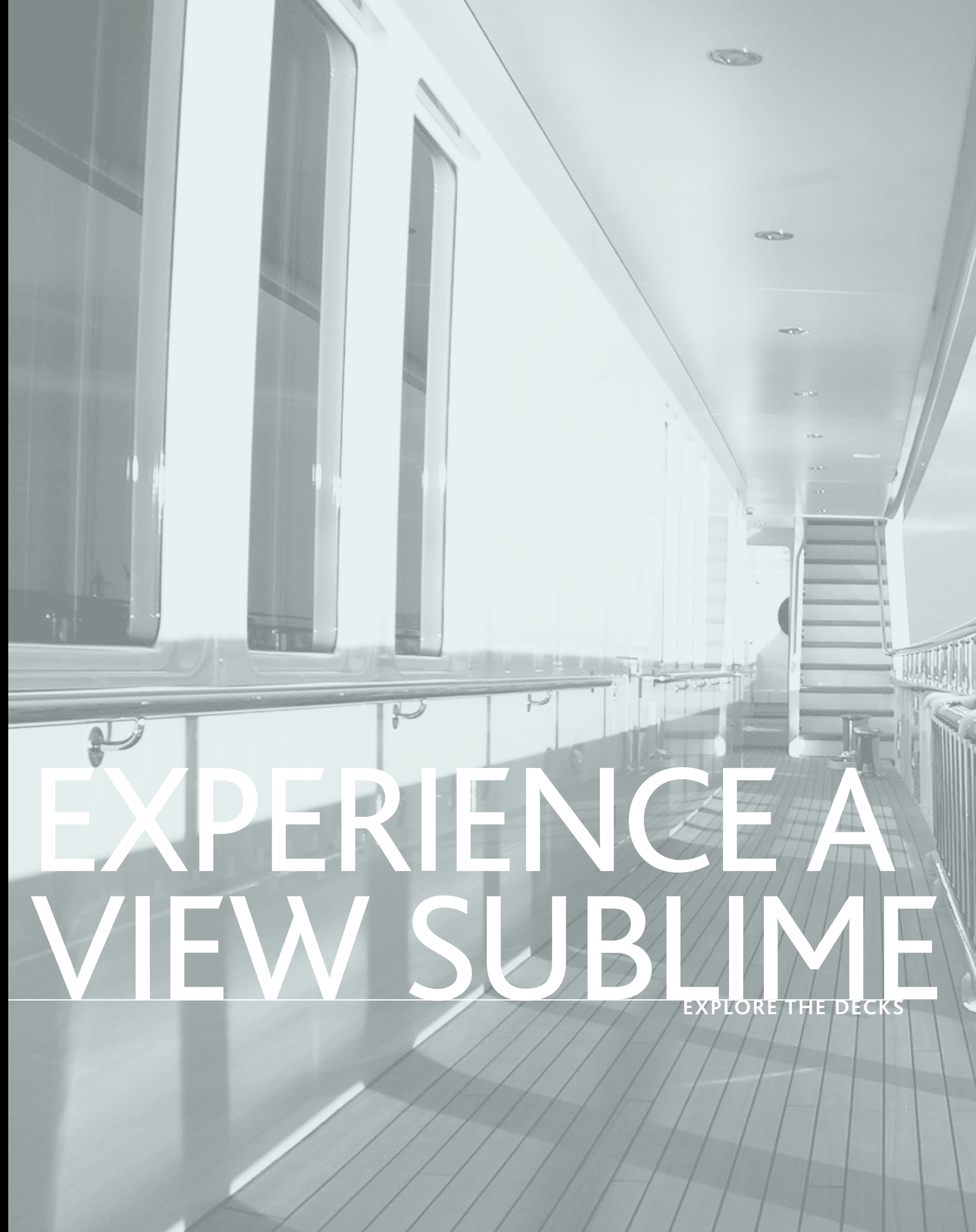




2
NO.

DISTINCTIVELY GRAND

Outdoor spaces on *Laurel* are inviting and versatile. Teak woodwork stretches to the horizon, beckoning guests to explore the many levels on which to take in the outdoors. The transom door acts as a swim platform and diving ledge for scuba enthusiasts. Two hull doors on the port and starboard sides allow easy deployment for tenders for day trips and travels to port. Also stowed here are sailboats, jet skis and sea kayaks for water fun. Adventurous guests are encouraged to make a splash on the Tarzan rope swing or take a refreshing and slippery trip down the waterslide. The main and upper decks have an abundance of seating arrangements including a shaded outdoor dining area and plenty of comfortable chairs to take in the view. High atop is a sun worshipper's paradise. Comfortable sun beds flank the deck adjacent to the hot tub. One unique detail is the appearance of a verdant herbarium, where the crew grows fresh herbs for cooking and helps provision the yacht during long trips. It inspires fresh and healthy meals as well as a faultless mojito or julep – or two. The forward wet bar and abundant seating more than quench one's thirst for luxurious outdoor living. This is life at the top, indeed.



EXPERIENCE A VIEW SUBLIME

EXPLORE THE DECKS





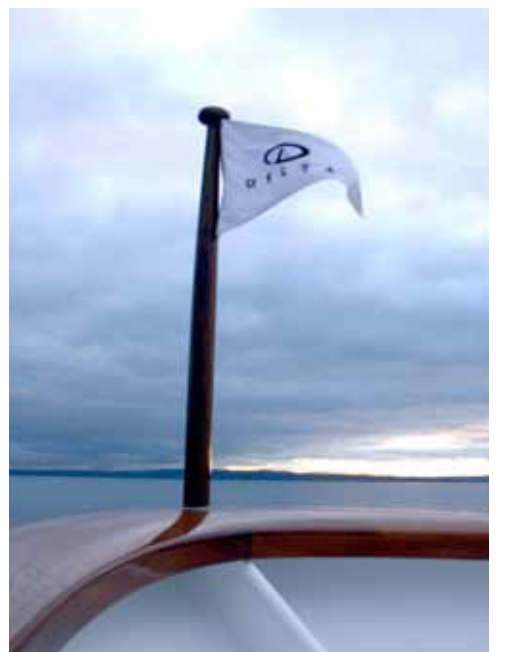
High atop, guests can lounge on the upholstered buffet, sip a cool drink at the forward wet bar, or smell the fresh mint and basil of the herbarium, the sundeck's unique garden.



There is no lack of outdoor spaces. Choose either soaking in the hot tub or soaking up the sun on a lounge chair.







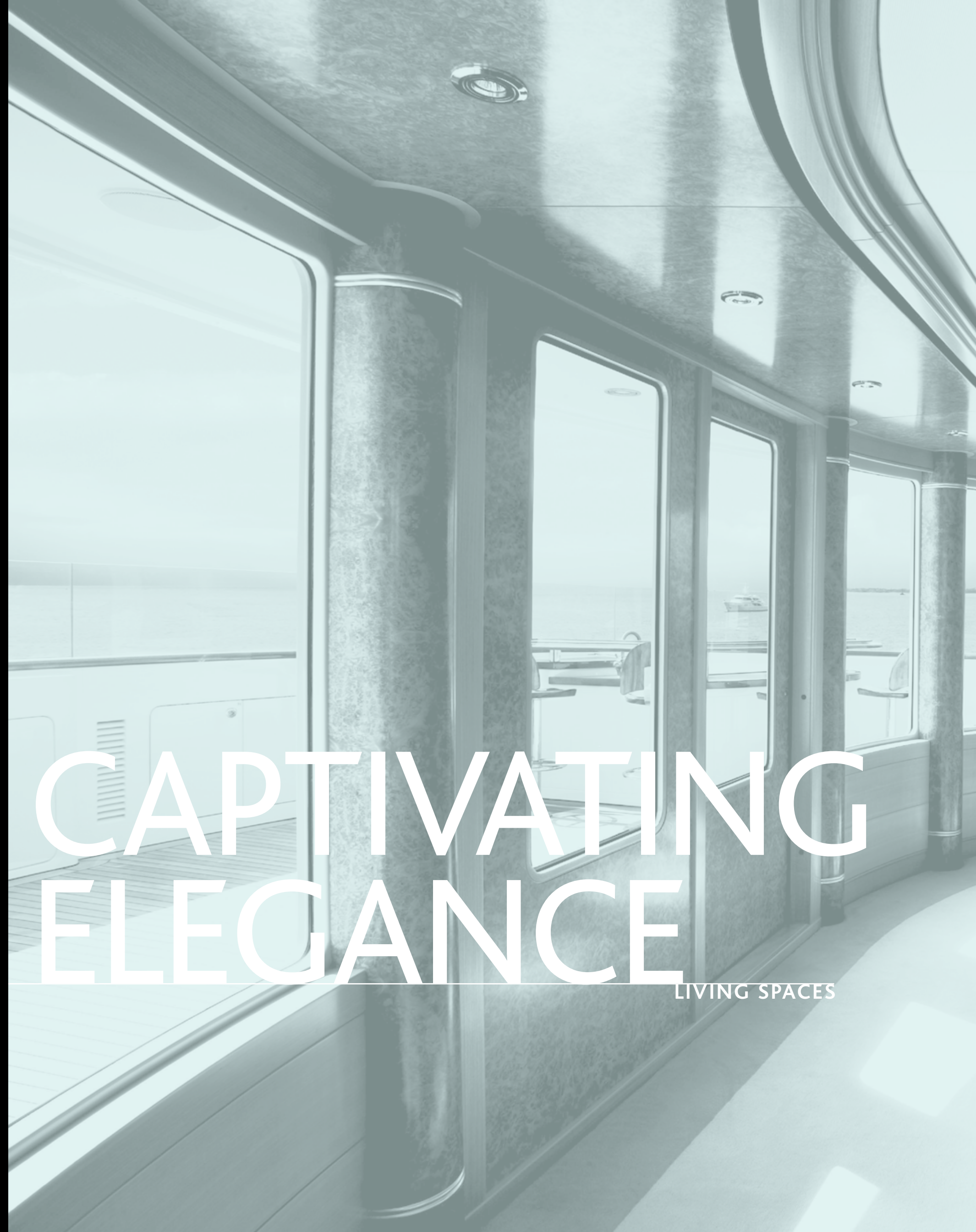


3

NO.

CHARM AND PANACHE

Laurel's owners wanted an atmosphere that was inviting and welcoming. It was imperative to create a décor warm and elegant, but not imposing. The interior features a sumptuous and soothing palette of golden neutrals. Color and texture unite, creating a sense of interior harmony. Each room features bright and brilliant artwork, adding vibrant expression throughout the yacht's evocative interior spaces. Even the ceilings have been expertly designed with geometric shapes that tip their hat to the art deco era. Just one of the many intricate yet pleasing details that display *Laurel's* skillful artistry, evident in even the most unexpected places. Another of the owners' desires was to create different sized rooms in a range of scale and lighting to provide the perfect environments for a variety of entertainment needs, from intimate to grand. The observation room on the sundeck is a terrific perch for daytime socializing as well as cocktails shared in the enchanting glow of the sunset. Inside the main salon, handsome woodwork creates an atmosphere both stately and soothing. The airy sky lounge, with its cream walls and comfortable furniture, envelopes guests in natural light. It's the ideal location for an informal gathering or breakfast flooded with morning sunshine.



CAPTIVATING ELEGANCE

LIVING SPACES





Dining aboard *Laurel* is grand and unforgettable.
Polished sideboards made of figured anigre and walnut
burl provide substantial storage for serving pieces.







Laurel's interior features an ingenious combination of public and intimate spaces to make this very large yacht still feel like a home.

The soothing décor is imbued with transcendent natural light.



4

NO.

SUPREMEY COMFORTING

Laurel's accommodations are matchless in their beauty as well as in their thoughtful arrangement. The master suite is positioned forward on the main deck and is as wonderfully private as it is conveniently located to the main living areas. It begins with a gracious alcove entrance. This is an ideal area for crew to provide breakfast service while leaving the owners undisturbed. Another gem of this charming space is the ample storage closet for stowing delights collected during the many onshore adventures. The foyer opens to a study replete with desk and a cozy seating area. Outdoor decks on either side of the suite allow the owners to enjoy sun or shade as they wish. Each guest room is abundantly appointed as well – they feature their own individual color schemes to ensure each one is special and unique. Rooms on *Laurel* are outfitted with push-button lighting designed to be soothing, inviting and mood-invoking. Getting ready for the day or evening is an inspiration and pleasure all its own – the impressive heads are galleries of splendid stonework, polished granite and exquisite recessed gold and silver leaf basin sinks encased in glass. Rich marble showers surround guests with a sense of elegance from every angle – a perfect statement of *Laurel's* impressive and pleasing accommodations.



A SANCTUARY APART

THE SUITES



A mixed use of exotic woods, textures and glass creates a comfortable but extremely graceful atmosphere.



Matchbook veneers and polished marble surround *Laurel's* owners with splendor in the master head. The private study includes a cozy sitting nook for intimate in-room breakfasts and afternoon coffee or tea.







5
NO.

INSPIRATION THROUGHOUT

When it comes to details, *Laurel* delivers. From the galley to the workout room, *Laurel* is the queen of inspired vision perfectly executed. She integrates the latest technology including a world-class entertainment system and 1200-point alarm and monitoring system. The exquisite woodwork on *Laurel*, one of her defining points of elegance, continues throughout the bridge, galley and crew accommodations. A special feature for the crew is that the mess and media lounge is located forward on the main deck, a particularly wonderful place to be. This light-filled space is well-appointed for both work and leisure. On the tank level, there is locker storage for crew belongings, as well as a gym. As impressive and history-making as *Laurel* is in size, she is also a benchmark of efficiency: her engine room, equipped with twin Caterpillar 3516 engines, is both functional and accessible. *Laurel* is certified to Lloyd's Register Yacht (P) requirements and is MCA code certified. She voluntarily complies with the International Maritime Organization ISM and ISPS policies and procedures. In addition, she exceeds the International Convention for the Prevention of Pollution from Ships (MARPOL). Simply put, *Laurel* provides the highest level of pollution prevention, safety and security measures applicable to worldwide operation.



DESIGN FULLY REALIZED

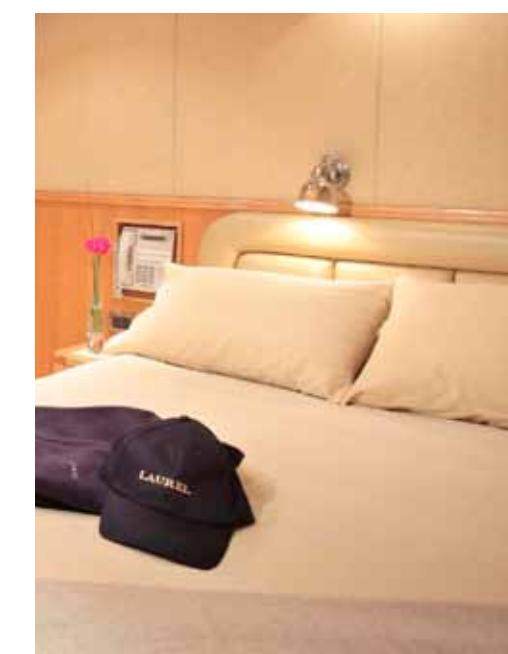
WORKING SPACES

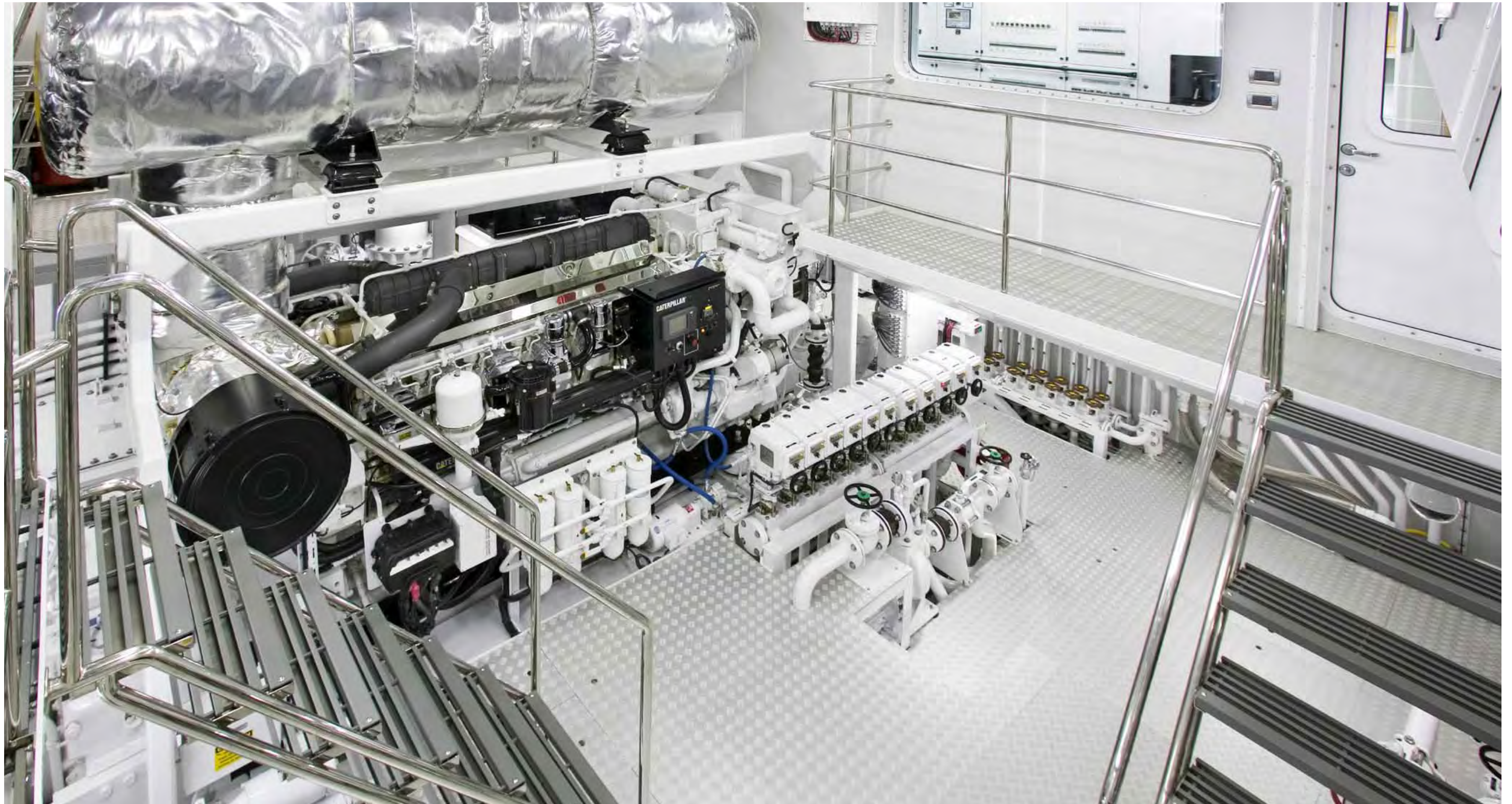


Maneuvering is aided by the use of a 250 kW bow thruster and a 150 kW azimuthing stern thruster, both by Jastram. A Quantum QC 1800 four-fin zero-speed stabilization system with the unique feature of pitch control will provide maximum comfort under way as well as when anchored. Electrical power is provided by three CAT C18 340 kW generators.



Whether it's front row seats for the creation of a culinary masterpiece in the galley or scenic inspiration during a workout, *Laurel* offers her guests and owners many vantage points to enjoy life to the fullest.







LOA	240' / 73.15 meters
LWL	211'-1 1/2" / 64.35 meters
Beam	40'-2 1/2" / 12.26 meters
Draft	12' / 3.66 meters
Displacement	1448 LT / 1472 tonnes
Gross Tonnage	1595 ITC
Engines	2 x Cat 3516B HD 2,500 HP @ 1,600 rpm
Transmission	ZF 7510 4.96:1 reduction ratio
Speed	18.2 knots
Cruise	13 knots
Fuel capacity	45,783 US gallons / 173,307 liters
Range	6,000 nautical miles @ 13 knots
Generators	3 x CAT C18 340 kW 1 x G&M 130 kW
Stabilizers	4 x Quantum QS 1800 Zero Speed
Bow Thruster	Jastram 250 kW
Stern Thruster	Jastram 150 kW Azimuth Jet
Fresh Water Capacity	11,000 US gallons / 41,640 liters
Water-Makers	HEM 40 / 4800 Duplex
Air-Conditioning	NR Koeling b.v.
Entertainment Systems	Criteria
Security Systems	Frankentek, Inc.
Crane	Ascon gantry crane Nautical Structures EZ-3000 MOB crane
Paint	Awlgrip
Material	Steel / Composite
Owners and Guests	14
Crew	25
Classification	100 A1 SSC Yacht (P), G6, LMC, UMS
Naval Architecture	Delta Design Group
Exterior Styling	Donald Starkey
Interior Space Planning	Donald Starkey
Interior Design	Donald Starkey
Builder/Year	Delta / 2006

While *Laurel* continually celebrates the beauty of classic yacht building, she is nevertheless state-of-the-art from stem to stern. The main propulsion system is provided by twin Caterpillar 3516 main engines with 2,500 horse power @ 1,800 rpms. These drive a shafting system which pairs an oil-lubricated stern tube and water-lubricated strut bearing, which improves hull efficiency by minimizing the appendage drag of the external shafting.

The true measure of innovation is not necessarily in how dramatically it is displayed, but how subtly, effectively – even invisibly – it can be integrated. In the case of *Laurel*, one could initially be beguiled by the classic low silhouette of the exterior and seamless execution of the woodwork. But behind the classic style and elegant finish lie some very inspired departures from the norm. This yacht displays the result of the collaboration between a progressive-minded client and an American yacht builder willing to take a fresh sheet approach to the challenge.



DELTA MARINE
1608 SOUTH 96TH STREET
SEATTLE, WASHINGTON 98108
T 206.762.2627

WWW.DELTAMARINE.COM

© 2007, Delta Marine Industries Inc.
All rights reserved.