



D E L T A

COMMITMENT TO EXCELLENCE

---



EACH DELTA  
DELIVERY IS  
AN ACHIEVE  
MENT TO BE  
CELEBRATED



LOCATION \_\_\_\_\_



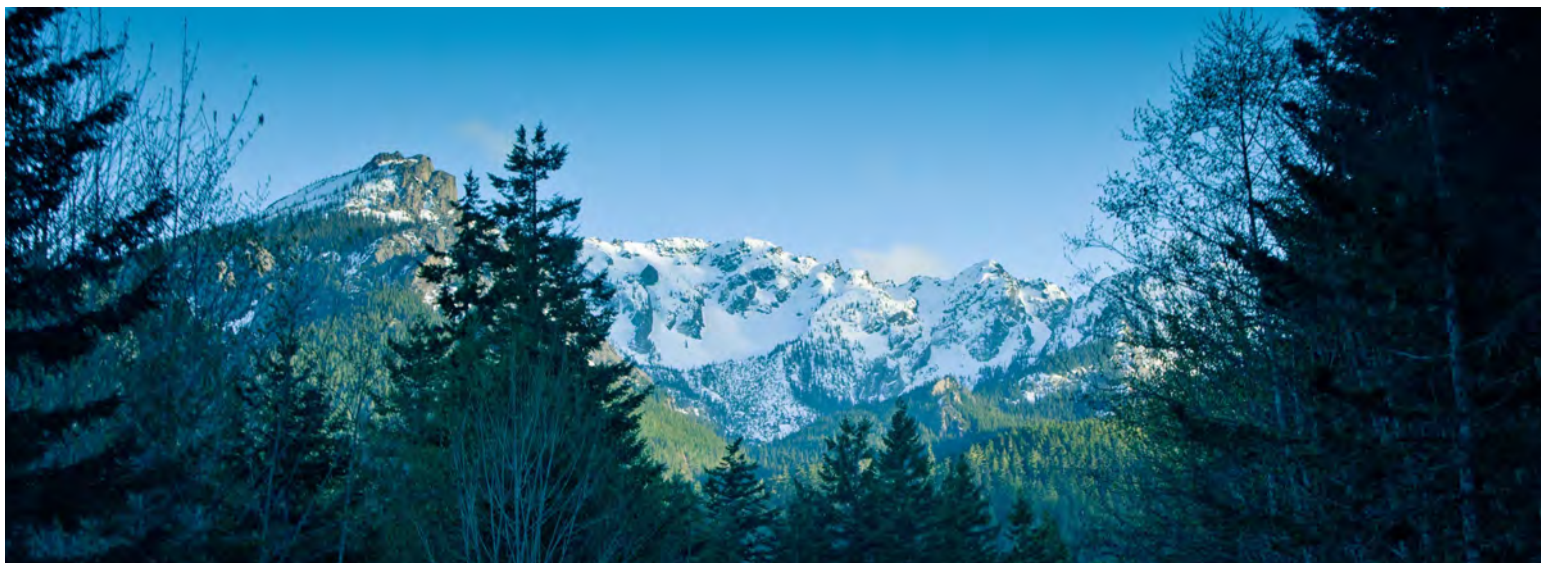


Inspiration often begins at home, and for Delta, there have been considerable advantages to growing an organization in a part of the world that's both a technology capital and an international center for large composite projects. Seattle is host to some of the most inventive companies ever conceived, including Microsoft, Boeing, and Starbucks. Boeing and Delta are both leaders in the Northwest's exciting tradition of composite innovation.

Seattle is renowned for being an influential urban center with easy access to spectacular natural beauty, including myriad charming islands dotting Puget Sound, magnificent Mount Rainier, the Olympic and Cascade mountains, plus the Olympic Peninsula's rain forest. In addition to some of the world's most stunning scenery, the Pacific Northwest abounds in wildlife, and is home to three orca whale pods and more bald eagles than anywhere in the continental United States. It's the ideal starting point for exploring Alaska — and many owners have set out from the Delta docks toward beautiful British Columbia, or sailed the Pacific toward sunny climes including Mexico and beyond.











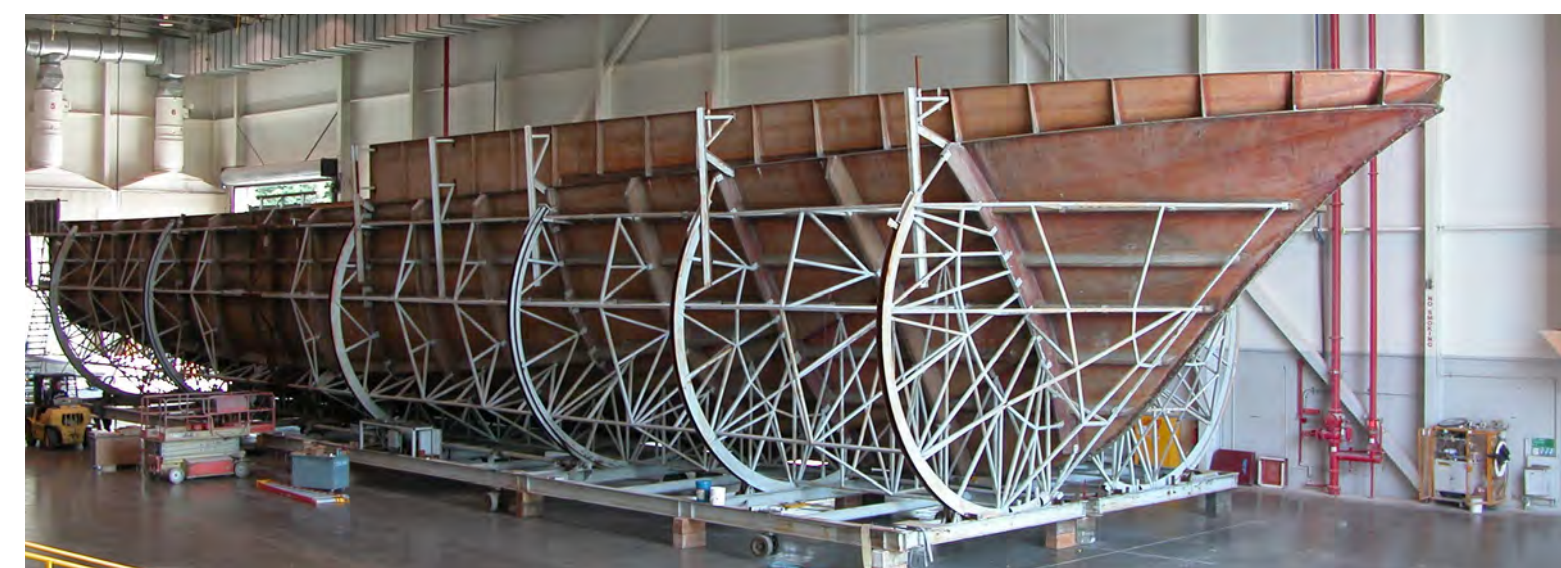
Located on a sprawling 25 acres, Delta has nearly 300,000 square feet of covered manufacturing space in a state-of-the-art facility. The company prides itself on housing all the marine trades on site, and sources as many American-made products and supplies as possible. It's Delta's successful formula to produce the finest quality work. Thanks to this comprehensive and connected facility, Delta team members have a fluency about ongoing projects that is unmatched. The shipyard is one of the most advanced, and Delta continually updates equipment and invests in new processes and technology in order to provide customers the most progressive and superior manufacturing ability. Delta is also an excellent custodian of the environment and the waterway where the work is performed. It ensures manufacturing is done indoors and manages its waste stream with the utmost care. In all ways, the Delta facility represents the best of metal and composite construction for yachts up to 100 meters.



TO CREATE A  
WORK OF ART  
YOU BEGIN  
WITH THE RI  
GHT TOOLS





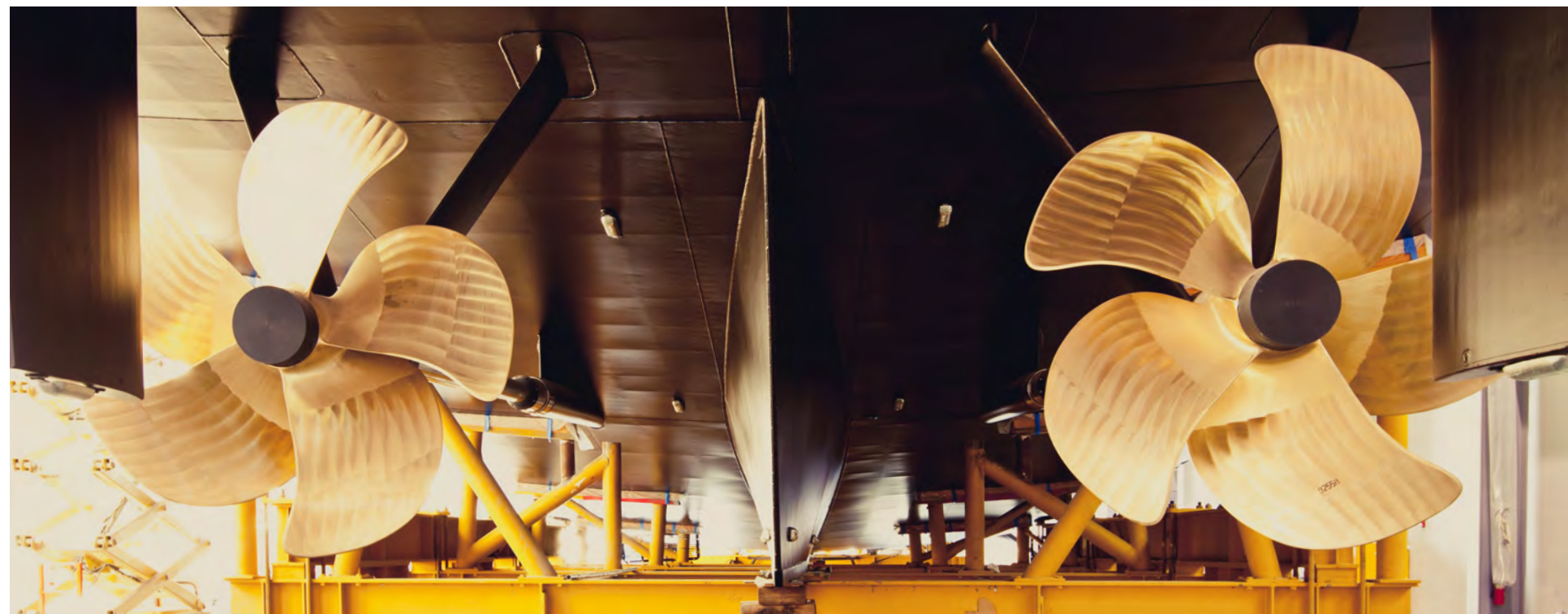




INSPIRATION: FIND IT TH  
ROUGHOUT OUR FACILIT  
Y AND IN OUR VERY FIBER







EXTRAORDINARY CRAFTSMANSHIP HAPPENS WHEN YOU COMBINE THE EYE OF AN ARTIST, THE HEART OF A FANATIC, THE BRAIN OF A GENIUS, AND HANDS OF A MAGICIAN. While technology and superlative manufacturing processes have certainly played a role in Delta's success, there is no greater resource at Delta than its team. By hiring and retaining the industry's top talent, Delta attracts the highest caliber artisans and craftsmen, with many second-generation family members joining the team. From fine carpentry to mechanical and electrical installation and the highest quality paint jobs in world, all work is completed here on-site where Delta can manage and deliver the high-quality yacht construction it promises. As Delta continues to grow and evolve, it adds professionals and field experts who share Delta's unified goal: to craft the world's finest yachts, while providing individualized, impeccable service.

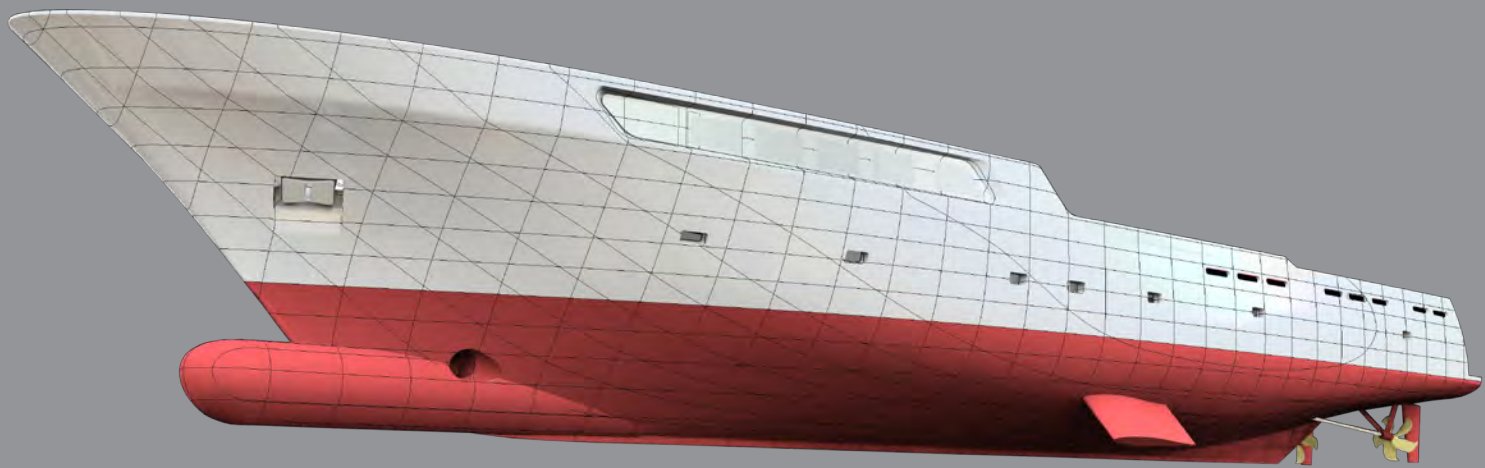
CRAFTSMEN







PUT OUR VIS  
ION SKILL AN  
D EXPERTISE  
TO WORK







WITH INCREDIBLE SKILL, IMPECCABLE PRECISION, AND LIMITLESS IMAGINATION, DREAMS ARE REALIZED — THE DELTA DESIGN GROUP. Delta offers an impressive in-house engineering and design team, the Delta Design Group. This beautiful state-of-the-art studio is a hub of inspiration for owners, captains, and collaborative partners. Delta's naval architects, marine engineers, and designers have extraordinarily accomplished backgrounds and decades of experience in both metal and composite shipbuilding; most impressively, they're the industry leaders in technical integration of metal hulls with composite superstructures. On the creative side, clients appreciate the team's skill and imagination and the ability they have to bring to life ideas and designs, from simple hand-drawn sketches to fully developed 3D renderings. Collaboration is Delta's strongest suit — while they offer the highest caliber naval architecture and design services, they can also work seamlessly with an outside team of an owner's choosing, ensuring the highest quality and reliability for all projects.





A JOURNEY OF EXTRAORDINARY BEAUTY AWAITS







Delta prides itself on providing exceptional service and maintenance for the entire ownership of one of its yachts. In particular, Delta's customers love and appreciate its full-service Refit & Repair facility. Whether it's mechanical or technical repairs, painting or refinishing, new interior work or expansions, Delta can handle any project, big or small. The facility features covered refit bays and a marine Travelift capable of lifting 440 tons, along with the support of the Delta Design Group. In addition to refit and repair work performed in Seattle, Delta offers excellent customer service and warranty in any part of the world. With every new yacht, Delta provides a dedicated point of contact with unequalled knowledge of the systems and construction, and can assist in anything from day-to-day operations to a full refit.

## SERVICE AND WARRANTY



AT YOUR SERVICE  
AND ALWAYS BY YOUR SIDE





A WORK OF BRILLIANCE A  
PERSONAL MASTERPIECE  
THE ADVENTURE BEGINS











THE DELTA STORY CONTINUES TO BECOME GREATER WITH  
EVERY NEW YACHT COMMISSIONED

---

For more than 40 years, Delta's most important value has remained unchanged. Delta provides the finest custom yacht manufacturing and services — with an owner's vision and desires at heart. This is a lasting commitment. As new generations of professionals join the ranks and unprecedented technologies enhance their capabilities, Delta remains steadfast in its goal to produce world-class yachts that are truly beyond compare.



