

DELTA MARINE

ONIKA

EST. 2014



Designed & built by Delta Marine in
SEATTLE, WASHINGTON USA

Delta Marine is a family owned company and makers of some of the world's most-loved and innovative luxury megayachts. With a heritage deeply steeped in maritime construction, Delta employs the finest craftsmen, cutting-edge designers and naval architects with one united goal: to create incomparable yachts that are truly customized masterpieces.



ONIKA

A STUDY IN BEAUTY THAT SURROUNDS AND TRANSCENDS

From her dignified profile and elegant interiors to the exacting details of her mechanical spaces and large crew accommodations, the 133-foot Onika is a rare, meticulously crafted, multifaceted gem. Spacious and remarkably silent, grand yet exceedingly friendly, examined closely, it's evident her owners' every desire was considered and realized. This is exactly why they returned to Delta twenty years after the creation of the first Onika to build their latest dream. She proudly represents the perfect union of highest-quality craftsmanship and advanced technology—an exquisite jewel, stem to stern, inside and out.



WITH A 29-FOOT BEAM AND WEIGHING IN AT 350 TONS, ONIKA IS AN IMPRESSIVE YACHT, POSSESSING THE STATELY MARKINGS OF TIME-HONORED YACHTING STYLE. Graceful, capable and refined, her prominent bow with long overhang, she is reminiscent of classic yachts of the early 20th century. Delta delivered a high-efficiency innovative composite hull, combining the best in long-range passage capability with the ability to access shallow-water destinations. With equal parts comfort and utility the priorities of her design brief, *Onika* is a handsome design that can cross oceans efficiently, in comfort and style.



While much attention was paid to her ability to perform with grace and comfort, she is also built to Lloyd's classification for the utmost in safety. The newest Onika can travel to even farther destinations, per her owners' request, as they wanted the confidence of expanding the distance of their journeys with the best safety technology available.



SEAWORTHY & EFFICIENT

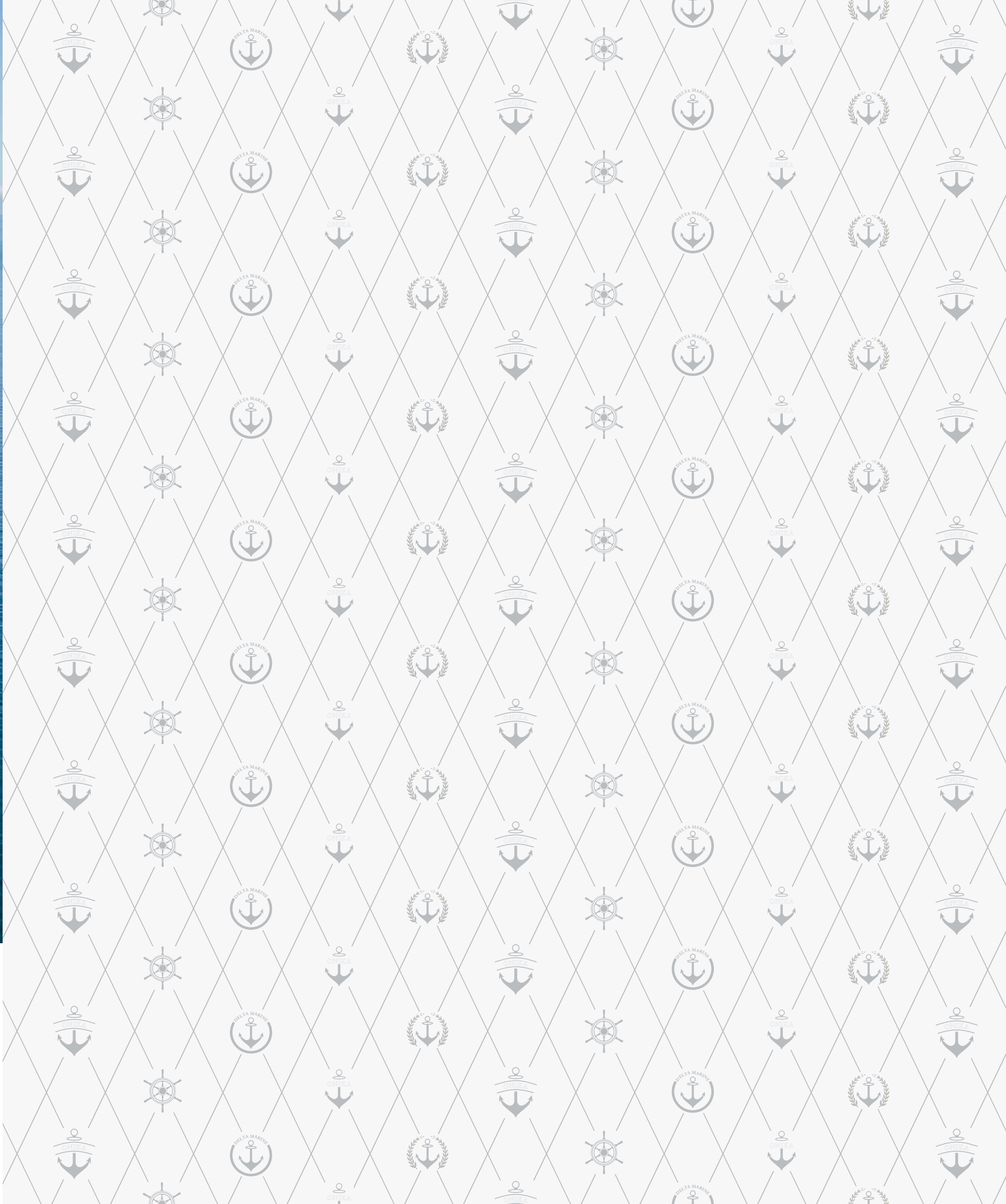
7
Ft. DRAFT







ONIKA IMPRESSES EVERYONE SHE MEETS—including a panel of illustrious judges at THE 2015 WORLD SUPERYACHT AWARDS. She won the award for Best Displacement Motor Yacht Below 500 GT of 30 to 43.99 meters. The World Superyacht Awards celebrates the finest new builds delivered annually, and is the highest recognition in the yachting community.







DESIGNER NOTES



The Delta Design Group and *Onika's* owners felt it was important to pay tribute to the spirit of her well-loved predecessor. She's less a departure from their previous yacht than an *evolution*, tapping the best of advanced technology and capabilities in her creation. But she includes some cherished carryovers—Delta incorporated her original steering wheel and ship's bell in the final delivery.

SUPREME OUTDOOR LIVING

DECKS

SPACIOUS & REFINED

REVEL IN THE BEAUTY, SURROUNDED BY NATURE





ONIKA'S OUTDOOR SPACES AND DECKS ARE CHARACTERIZED BY THE SAME ELEGANCE AS HER INTERIORS, with decks flowing gracefully from bow to stern. Beautiful details are boundless throughout *Onika*, as witnessed by the motorized aft-deck bi-parting teak doors. Exuding warmth and exacting craftsmanship, their classic styling with glass panels and molded wood dividers is encased in a seaworthy and solid frame. The high-gloss doors are aesthetically beautiful while also providing protection from the elements. Their quartered Khaya mahogany finish coordinates seamlessly throughout *Onika's* interior.



The sun deck is a complete outdoor living space, with forward-facing settees, a dining table for eight, and a bar and TV, as well as room for chaise lounges and a convenient outdoor shower for rinsing off and cooling down. Two tenders are stowed on the aft bridge deck, able to launch on either side. On the main deck there's dining for six, and ample space for lounging and al fresco entertainment.



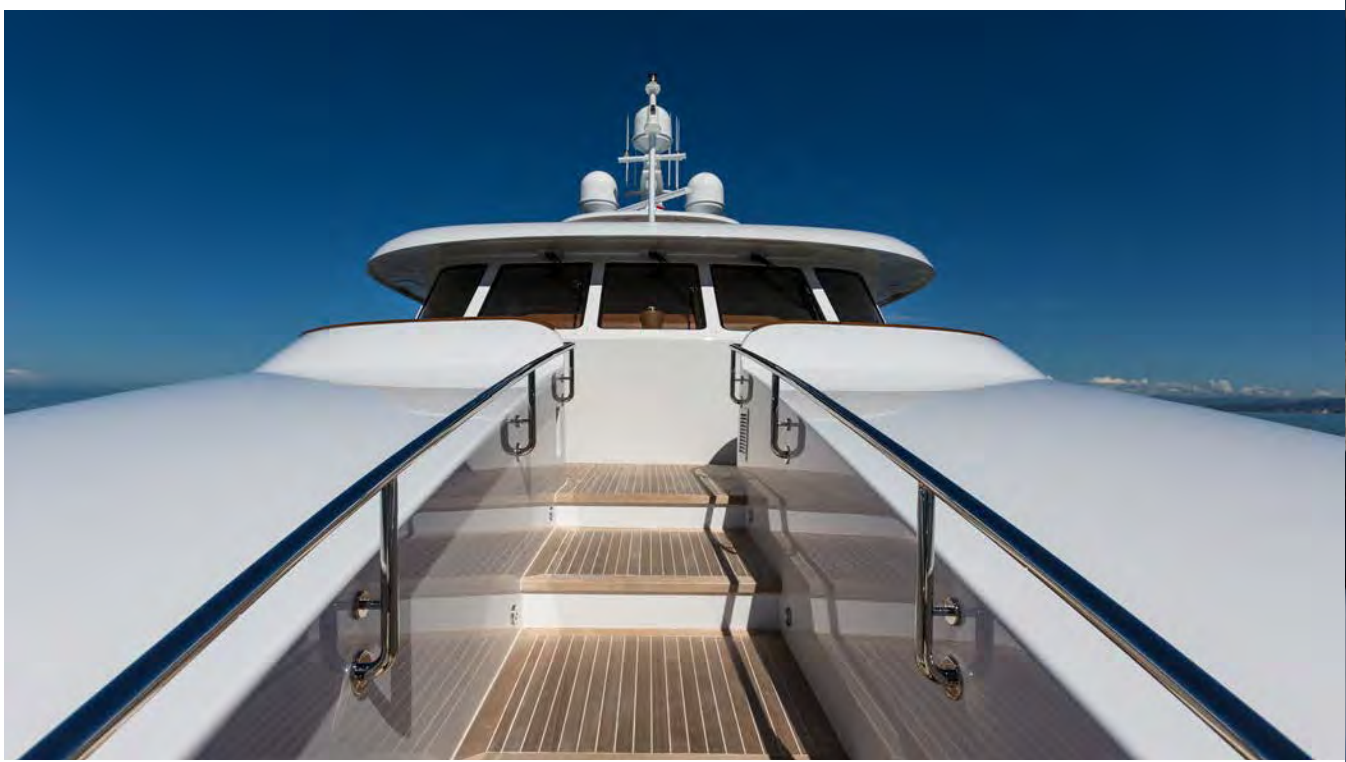
Lost in time
in the very best way

Step outside. Surrounded by an expanse of warm teak and glowing stainless, it's time to enjoy the show. Nature's splendors take center stage, with unspoiled vistas at every turn. Watch the artistry and complexity of the ever-changing sky. Witness the setting sun with new eyes. Breathe in inspiration, as an otherworldly breeze touches your heart. Celebrate the arrival of twilight as the world cools down, and reflect on a day well spent. The ocean mirrors the vastness of gratitude. Light dances off water, a thousand glimmering moments to give thanks, here at peace, drifting on the ebb and flow of life.





BOUNDLESS BEAUTY
29'
EXTREME BEAM





AS ONIKA NAVIGATES THE OCEAN’S WATERS, GUESTS HAVE FRONT-ROW SEATS TO SAVOR THE BREATHTAKING SURROUNDINGS. Her outdoor spaces were designed to truly celebrate the sights and sounds of high-seas voyaging. While there’s ample access to sunshine, her traditional tri-deck design features covered walk-around areas and plenty of locations to relax in the shade. Her uppermost deck has a hardtop for sun protection, and a hydraulically activated fold-down mast for when she’s docked in her boathouse.







DESIGNER NOTES



In keeping with the lines of classic yachts, the hull retains a long sweeping sheer and graceful bow. Using composites allowed us to softly blend shapes and create flowing style lines. The exterior lines echo the interior spaces without excessive frivolousness or decoration, the overall result serene and stately.

ELEGANT, DETAILED, REFINED

INTERIOR

LIVING SPACES

A MOST GRACIOUS AND PLEASING HOSTESS BEYOND COMPARE





QNIKA'S ELEGANT, RICHLY DETAILED FOYER IS WELCOMING TO ALL WHO ENTER. Khaya mahogany raised-and-fielded wall panels line the way to the handsome main salon, where guests are entertained in an Edwardian-inspired drawing room filled with the owners' antique furnishings set under stately coffered beams. Both the main salon and formal dining salon, separated by beautifully handcrafted mahogany pocket doors, feature impressive pieces from the owners' collection of original impressionist art. Befitting a classic gentleman's yacht, this theme of ageless and casual elegance continues throughout the main deck.



Cream-colored Botticino marble floors adorned with sodalite stretch throughout the entrance, the royal blue gemstone masterfully echoed in the jeweled details found in the metal newel posts of the intricately carved handrail.





STEP INSIDE ONIKA'S SKY LOUNGE AND EXPERIENCE THE EPITOME OF CASUAL ELEGANCE.

Natural light floods through the large windows, and enlivens the palette of creams and nautical blues. Juxtaposed against rustic planked-teak floors, German oak, and painted bookcases, carefully detailed furniture is cozy and inviting, providing the ideal setting for a spirited game of cards or reading a great book. A corner quarter-round mahogany bar cabinet with pocket doors is to one side and a bow-front end table in striped sapele and Anigre veneer to the other. The overall feeling is intimate and relaxing, with a British West Indies ambiance.

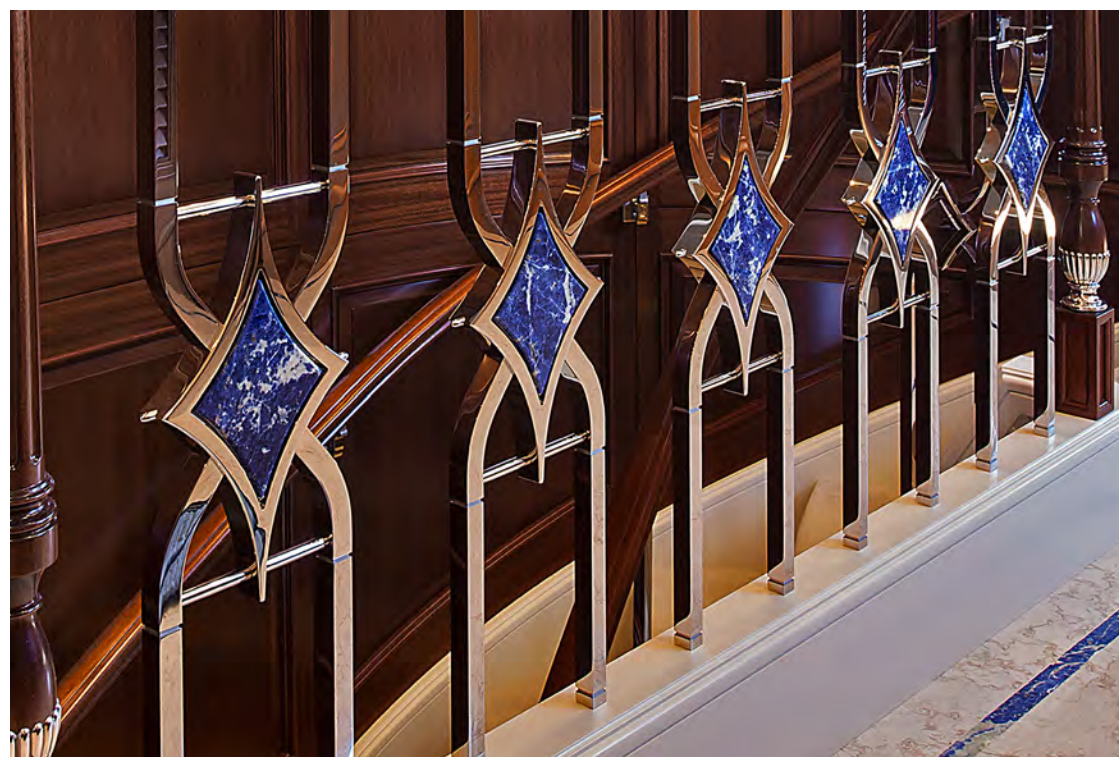




SUPREMELY CRAFTED

14

WOOD TYPES





A home on the water
Elegance has never felt more comfortable

It's the rare opportunity when you can truly get away and feel perfectly at home. The most gracious hostess bestows every guest with a sense that their happiness is the only priority—you know this the moment you step aboard. Take a walk through the honey-colored hallways. Find new inspiration for your workout with a view that always changes. Sleep comfortably in your private oasis. Whether it's a quiet afternoon enjoying the serenity of the ocean, or cocktails under the stars on the sundeck, it's that effortless sense that every day is a holiday, a gift to be enjoyed to the fullest.





HE GRACIOUS ELEGANCE OF THE INTERIORS CONTINUES AS YOU TRAVEL BELOW DECK.

Onika features a large full-beam master that provides a tranquil and welcoming pause for her owners' uninterrupted enjoyment. The design brief included an owners' suite on the lower deck; because of the owners' desire to travel onboard extensively, they preferred the master to be in a comfortable location, low and amidships. One of the stateroom's unique details is the adjacent lounge and office area, which can be closed off from the main room to provide an en-suite retreat.



The lower deck hallway, with beautiful German Spessart oak walls and inlaid marble floors, leads guests to two spacious guest cabins. The en-suite heads are finished with heated marble floors and nautically inspired wall coverings. Other fabrics display a dramatic palette of rich blue, red and green jewel tones and textures.



ELEGANT & INVITING
4,533
SQUARE FEET





DESIGNER NOTES



The en-suite heads feature heated inlaid crema marfil or breccia oniciata marble floors, extending up to a vanity-coordinated stone wainscot. The bath consoles and cabinets showcase the same gorgeous woodworking detail that appears throughout *Onika's* living spaces, and a subtle yet surprising pop of color is cleverly incorporated in the design.



THOUGHTFULLY DESIGNED

CREW

WORKING SPACES

INCREDIBLY SPACIOUS CAPTAIN AND CREW AREAS



LONG-RANGE TRAVEL

4,000

NAUTICAL MILES

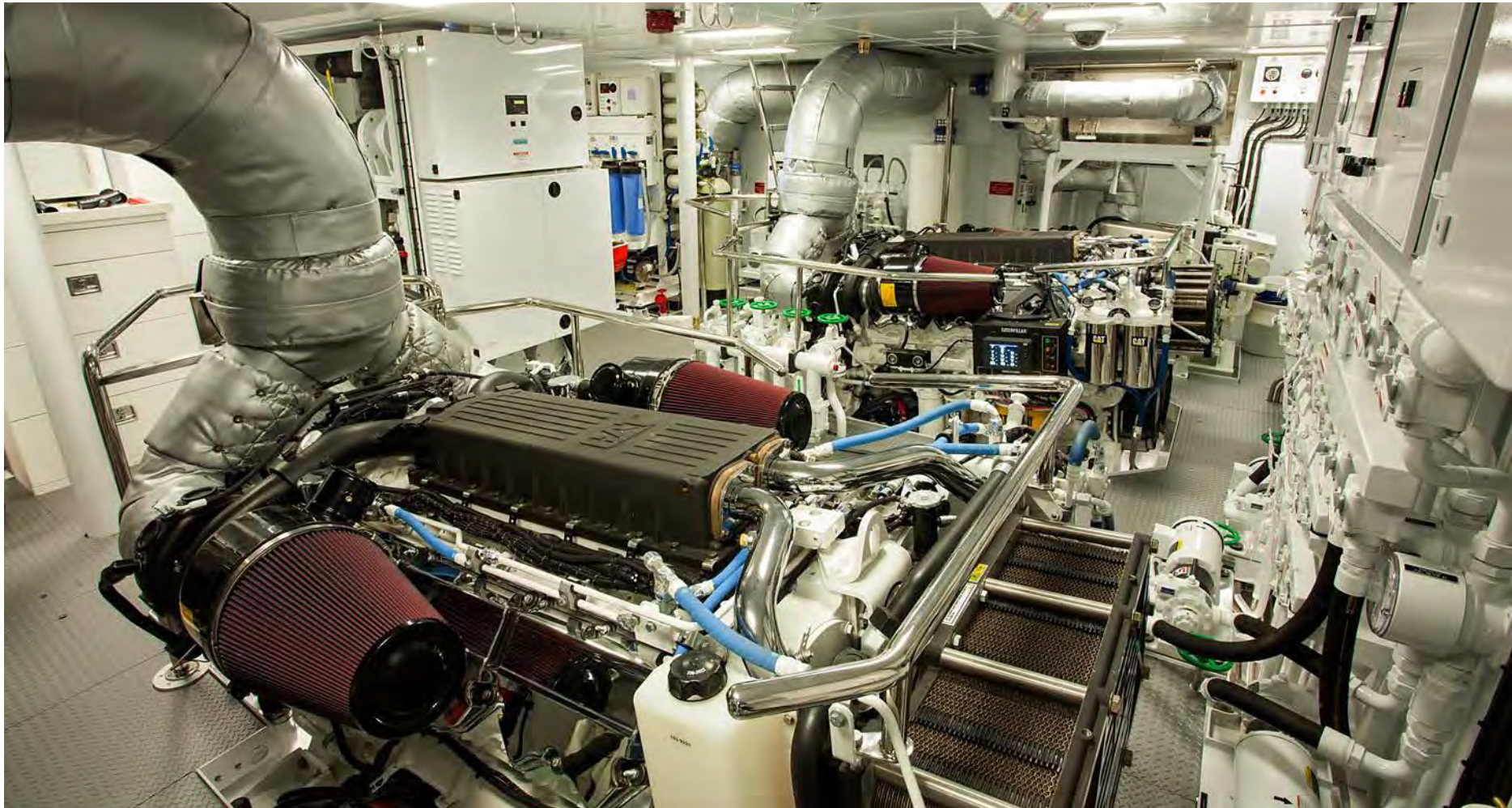




ONIKA

SPECIFICATIONS

LOA	<i>133' / 40.5 M</i>	SUPERSTRUCTURE MATERIAL
LWL	<i>119' 2" / 36.3 M</i>	COMPOSITE
BEAM	<i>29' / 8.8 M (EXTREME)</i>	HULL MATERIAL
DRAFT	<i>7' / 2.1 M (HALF LOAD)</i>	COMPOSITE
GROSS TONNAGE	<i>424 GT ITC</i>	OWNERS AND GUESTS
ENGINES	<i>(2) CAT C32 ACERT 1,600 BHP @ 2,300 RPM</i>	<i>6</i>
MAXIMUM SPEED	<i>16 KNOTS</i>	CREW
CRUISE	<i>13.5 KNOTS</i>	<i>8</i>
FUEL CAPACITY	<i>14,720 US GALLONS 55,721 LITERS</i>	NAVAL ARCHITECTURE
RANGE	<i>4,000 NAUTICAL MILES @ 12 KNOTS</i>	DELTA DESIGN GROUP
FRESH WATER CAPACITY	<i>2,450 US GALLONS 9,274 LITERS</i>	EXTERIOR STYLING
WATERMAKERS	<i>WMXQ-3000 GPD</i>	DELTA DESIGN GROUP
GENERATORS	<i>(2) NORTHERN LIGHTS MI064H 99 ekW</i>	INTERIOR SPACE PLANNING
STABILIZERS	<i>QUANTUM QC-1200</i>	DELTA DESIGN GROUP
CLASSIFICATION	<i>LLOYD'S REGISTER 100 MALTESE CROSS AI SSC YACHT G6 MONO MCH</i>	INTERIOR DESIGN
		DELTA DESIGN GROUP
		BUILDER / YEAR
		<i>DELTA / 2014</i>



ONIKA WAS DESIGNED TO PERFECTION DOWN TO THE FINEST DETAIL, WITH A GREAT DEAL OF ATTENTION ALLOCATED TO HER CREW. Crew accommodations are generous and spacious, improving the overall living and working experience, as well as making service to guests easier. The light-filled crew mess with its oversized windows is located on the main deck forward of the galley. And the captain's quarters, located on the upper deck aft of the bridge, have the same high-quality finishes as the guest staterooms.

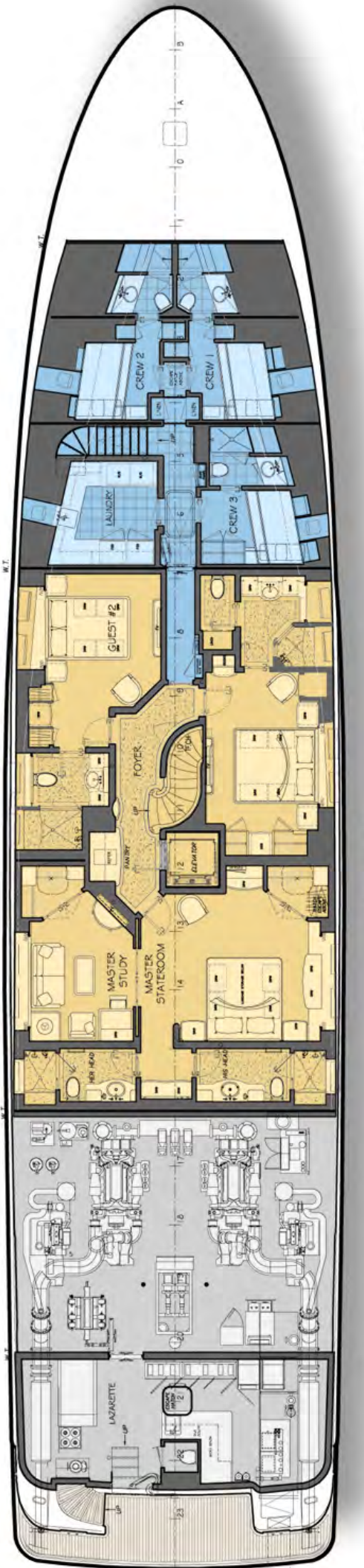
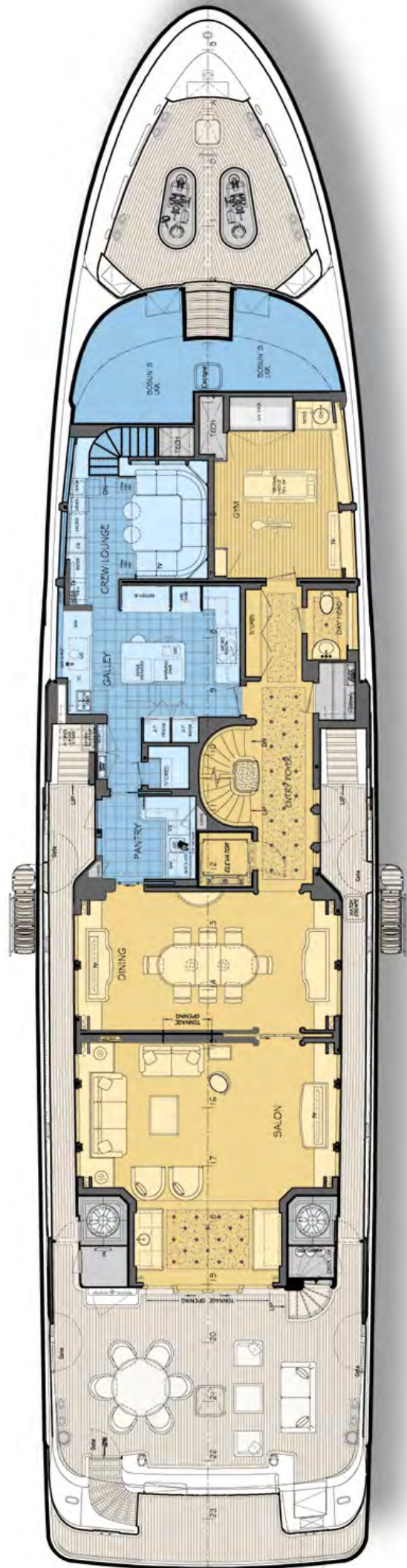
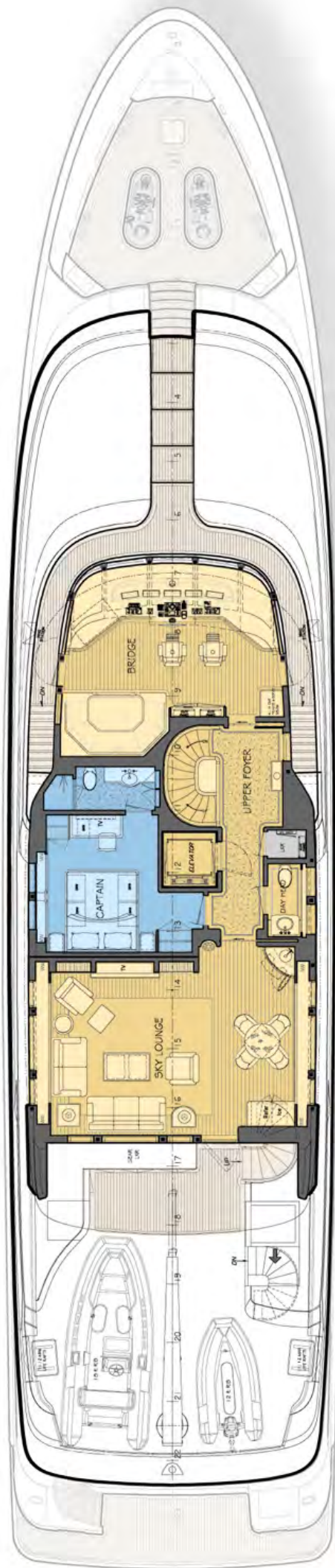
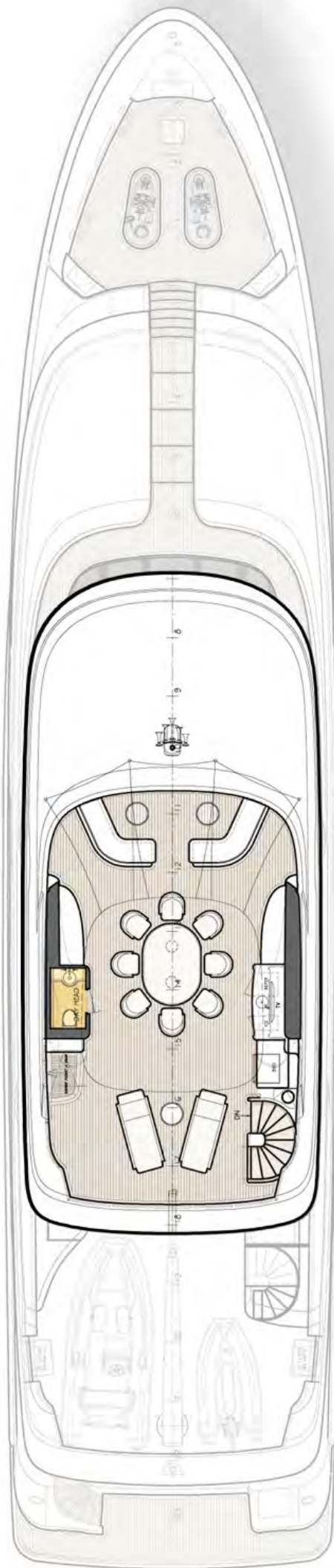


Powered by twin Caterpillar C32 main engines, Onika has a maximum speed of 16 knots and cruises at 13.5 knots. With her 14,720-gallon fuel tank, she has a transatlantic range of over 4,000 miles. Quantum Zero Speed stabilizers ensure a nice gentle ride both at anchor and underway. Her Northern Lights generators are equipped with catalytic soot traps for reduced emissions.

ONIKA

SPECIFICATIONS

LOA	133' / 40.5 M	
LWL	119' 2" / 36.3 M	
BEAM	29' / 8.8 M (EXTREME)	
DRAFT	7' / 2.1 M (HALF LOAD)	
GROSS TONNAGE	424 GT ITC	SUPERSTRUCTURE MATERIAL
ENGINES	(2) CAT C32 ACERT 1,600 BHP @ 2,300 RPM	COMPOSITE
MAXIMUM SPEED	16 KNOTS	HULL MATERIAL
CRUISE	13.5 KNOTS	COMPOSITE
FUEL CAPACITY	14,720 US GALLONS 55,721 LITERS	OWNERS AND GUESTS
RANGE	4,000 NAUTICAL MILES @ 12 KNOTS	6
FRESH WATER CAPACITY	2,450 US GALLONS 9,274 LITERS	CREW
WATERMAKERS	WMXQ-3000 GPD	8
GENERATORS	(2) NORTHERN LIGHTS MI064H 99 ekW	NAVAL ARCHITECTURE
STABILIZERS	QUANTUM QC-1200	DELTA DESIGN GROUP
CLASSIFICATION	LLOYD'S REGISTER 100 MALTESE CROSS AI SSC YACHT G6 MONO MCH	EXTERIOR STYLING
		DELTA DESIGN GROUP
		INTERIOR SPACE PLANNING
		DELTA DESIGN GROUP
		INTERIOR DESIGN
		DELTA DESIGN GROUP
		BUILDER / YEAR
		DELTA / 2014







Exterior Photography JEFF BROWN
Interior Photography MARTIN FINE

Photos taken in Southern California,
USA and Puerto Vallarta, Mexico

