



D E L T A

M R . T E R R I B L E

SOPHISTICATED AND
STRAPPING, MR. TERRIBLE
IS A PERFECT BALANCE OF
PERFORMANCE AND DESIGN.



ALLOW US TO INTRODUCE MR. TERRIBLE

A remarkable execution of speed, agility and style. At 154-feet, Delta's newest creation is a high-performance, semi-displacement motor yacht with contemporary styling. Built entirely of composite materials, Delta utilized the benefits of carbon fiber to ensure a lightweight yacht that is strong, durable and performs to its expectations. The interior, a Polynesian paradise, invokes a sense of leisure, relaxation and adventure. Fashioned with impressive engineering and attractive styling, *Mr. Terrible* is sure to make a grand impression.





sleek. modern. fast. fearless.

The dramatic lines, smoked glass and sleek profile declare this yacht is powerfully built. Twin MTU 16v4000 engines with 3,650 horsepower each are at the heart of *Mr. Terrible's* impressive performance. The gleaming red engines represent machinery that is as capable as it is beautiful. She can reach cruising speeds of 20 knots quite comfortably, and a maximum speed of almost 24 knots. Her dramatic visual profile accurately represents her impressive ability to perform with speed and deftness. It is the perfect union of stylish naval architecture crafted with personality and precision.



SLICING THROUGH
THE WATER, IT IS
EVIDENT MR. TERRIBLE
IS BUILT FOR SPEED

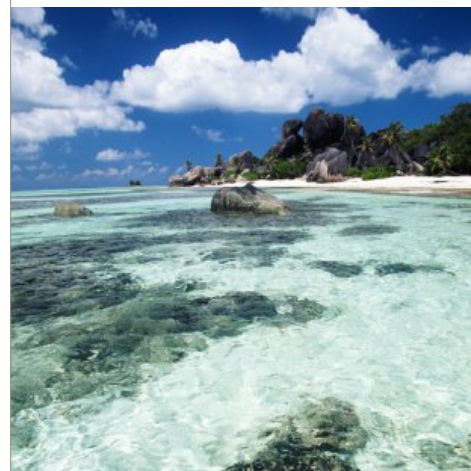




AN EXTRAORDINARILY HANDSOME POINT-OF-VIEW,
FROM EVERY PERSPECTIVE

brilliance in the open air

Mr. Terrible's outdoor spaces are prime territory for enjoyment where relaxation and recreation are the only things on the agenda. Numerous gathering spaces draw people outdoors for fresh air and conversation. The fly bridge, which features a full steering station, is brimming with indulgent details for those who enjoy lounging – including a hot tub, wet bar and one of two onboard margarita machines. Guests are encouraged to soak as long as they desire, thanks to the convenient retractable 50-inch plasma screen television and floating wireless remote. The aft deck features a large Bubinga and Wenge table with wicker chairs, the perfect setting for alfresco dining. Warm camaraderie, along with infrared heat panels, keeps everyone cozy during evenings spent under the starry skies.





primed for adventure

When it comes to enjoying the open seas, *Mr. Terrible* is an enthusiast. The quest for marlin, dorado and tuna is a great source of enjoyment for the owners and their friends, so *Mr. Terrible* is thoroughly equipped for the chase. The fishing cockpit on the main deck features a live bait tank and rod locker. Guests can choose to get up close and personal with the aquatic life by taking advantage of the Nitrox dive compressor and six full sets of dive gear on board. Perhaps it's waterskiing or kayaking that suits you best. Two tenders are equipped to take you wherever you need to go and a unique hydraulic swim ladder will make sure you enter and exit the water with ease. Finally, for those who like to experience marine adventure from the luxurious comforts inside, an underwater camera installed under the transom captures deep-sea curiosities in real-time and broadcasts the action live.





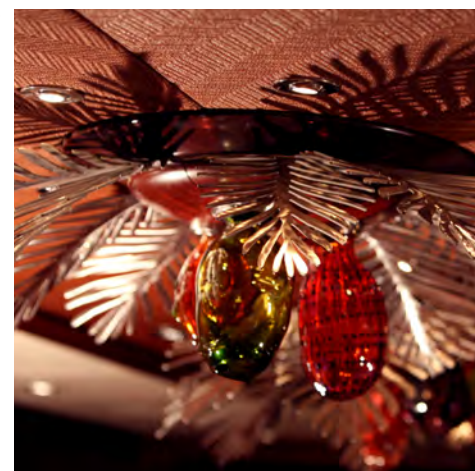


CONCEPT STUDIO OF CORONA DEL MAR DESIGNED THE LOVELY
SEA SHELL WALLS IN THE DAY HEAD



an appetite for magnificent entertaining

Step inside *Mr. Terrible* and prepare to be transported to a paradise of coconut trees, coral reefs and ultimate pleasure. It is Polynesian artistry reinvented, imbued with elegant art deco touches, vibrant tropical glasswork and intricate details. Rich exotic woods of Wenge, Bubinga and Koa surround you. The overall effect is a harmonious contrast of modern and primitive, delighting all with imagination. The central staircase creates a dramatic focal point. Crafted of Bubinga, and accented with Wenge and stainless steel, it's just as much function as it is dazzling. The dining salon, with room for fourteen, is framed by a majestic chandelier comprised of abstract botanical forms and brushed aluminum fronds. It's an unforgettable milieu for formal dining experiences.



THE EXQUISITE DETAILS OF
MR. TERRIBLE OFFER A
FEAST FOR THE SENSES

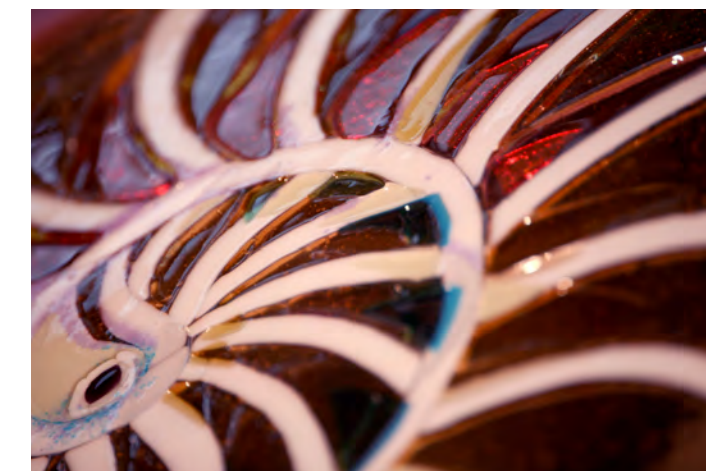
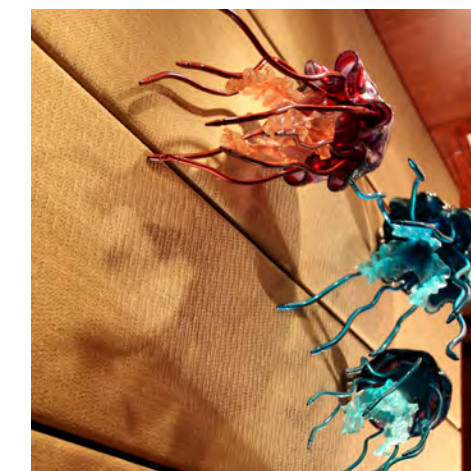
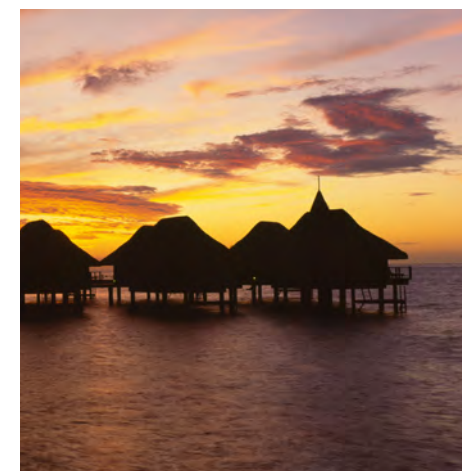






designed for high spirits

Once inside, it is quickly evident that the floor plan is open, airy and light; a floating gallery where the rooms themselves act as functional works of art. Splashes of color are infused in the hand carved floral inlay carpet and fine upholstery, an enticing contrast against the soothing, neutral walls. Bamboo, woven woods, leather hides and textured fabrics are integrated into the architecture to give a feel of transcendent simplicity. Furniture collections feature a heavy use of hardwoods and rattan, and were designed to be wonderfully comfortable. One hallmark of *Mr. Terrible* is the elegant woodwork that spans the interior spaces, from the African walnut flooring to the Bubinga ceiling beams.





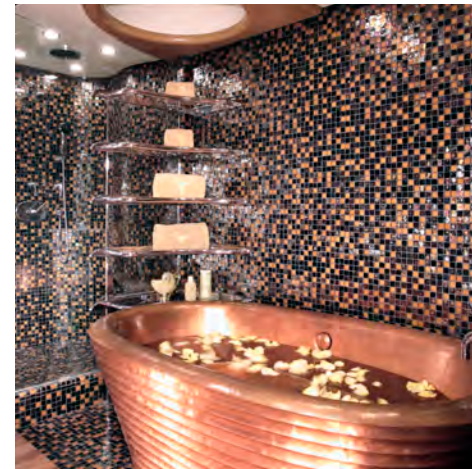
MR. TERRIBLE'S WHEELHOUSE FEATURES QUARTERED FIGURED MAKORE VENEER AND THE LATEST IN NAVIGATION TECHNOLOGY



THE WALL SCONCES
ARE REMINISCENT OF
DESERT CACTUS

revel in tranquility

Inside the master suite, one discovers an intimate and private oasis. The walls soothe and surround you with rich textured tropical woodwork, in a variety of opulent grains, and polished to ethereal perfection. High above the king sized bed, a glorious nautical-inspired stained glass oculus brings in resplendent natural light, yet it can be screened at the touch of a button. Inside the master head, bronze and black glass mosaic tiles set a dramatic canvas for twin hand-turned wood basin sinks and the opulent copper soaking tub. It's the ideal place to begin or end a day full of adventure.

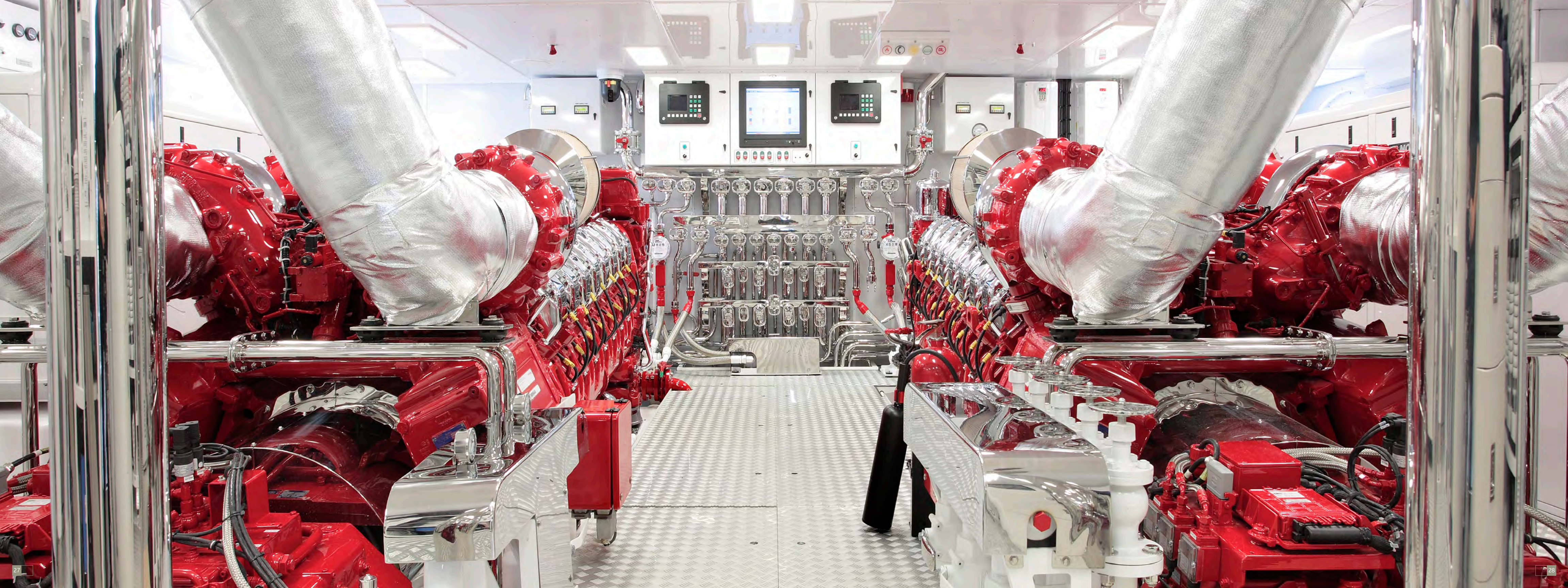




the master of hospitality

Follow the central spiral staircase downstairs and you'll find four spacious, luxuriously appointed staterooms. Each one shares the same harmonious design scheme that prevails throughout *Mr. Terrible*, yet to give each room a dash of originality, they are finished in four separate color palettes. The rooms are equipped with Pullman berths for children and the two VIP suites include a settee. The owner's have made certain that guests aboard *Mr. Terrible* will enjoy their time thoroughly, ensuring that each room is a private cove of relaxation. In fact, the only terrible part of your stay might be the day you step ashore and say goodbye to this charming and irrepressible host of the high seas.







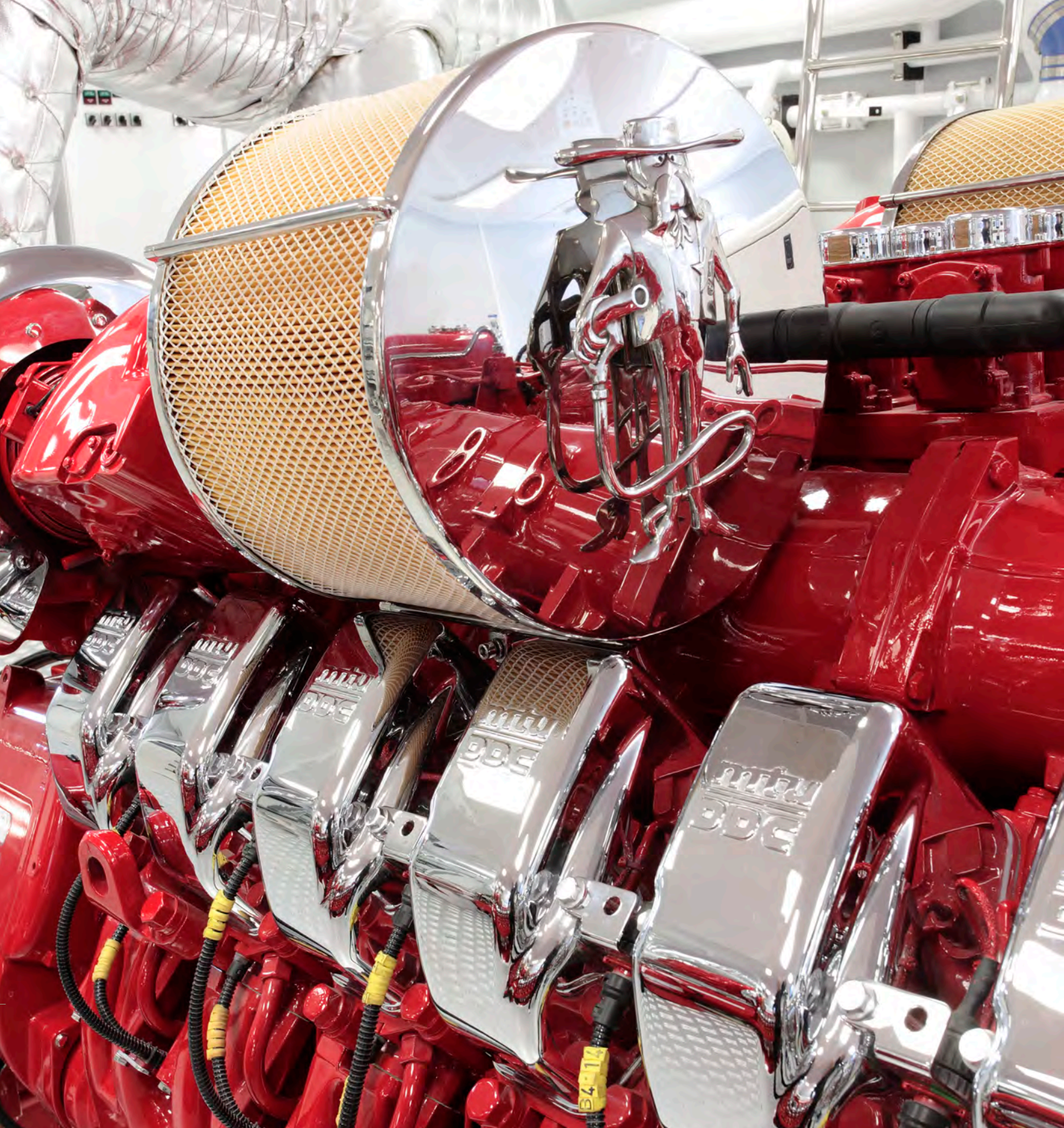
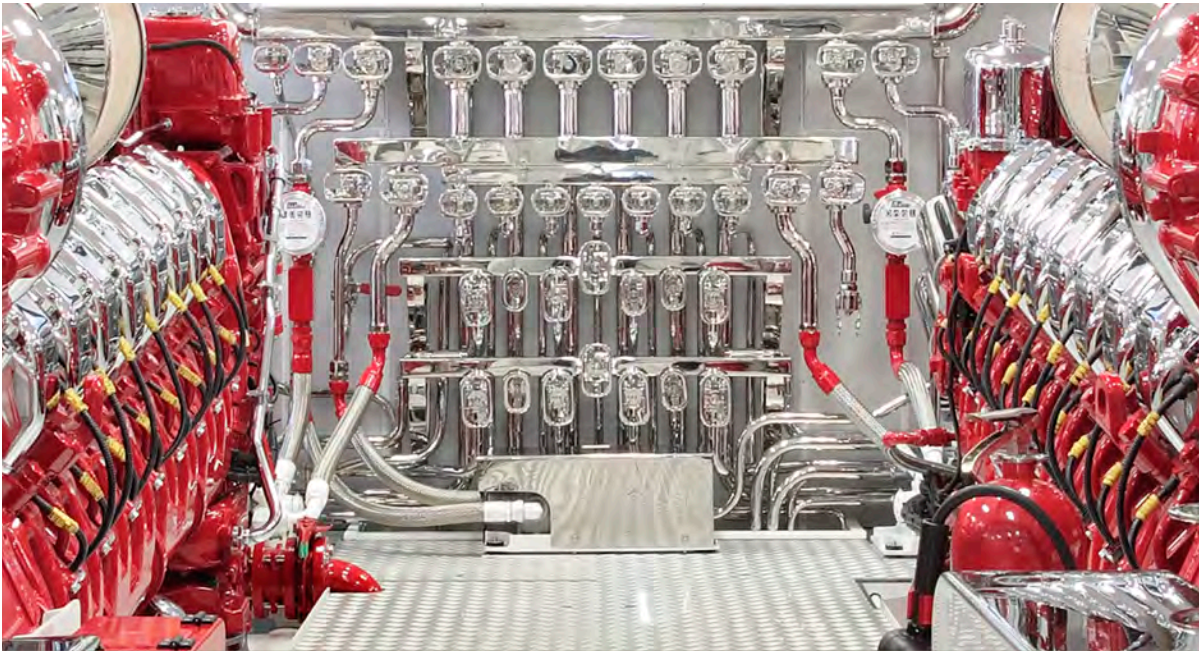
LOA	154'46.94 meters
LWL	138'-3"/42.14 meters
Beam	28'-8"/8.74 meters (molded)
	29'-8"/9.04 meters (extreme)
Draft	8'-2 1/2"/2.5 meters (full load)
	7'-1"/2.2 meters (half load)
Displacement	384 long tons (full load)
	360 long tons (half load)
Engines	2 MTU 16V4000
	3,650 BHp @ 2,100 rpm
Speed	23 knots
Cruise	20 knots
Fuel capacity	14,786 US gallons/55,971 liters
Range	2,700 nautical miles @ 14 knots
Fresh water capacity	2,077 US gallons/7862 liters
Generators	(2) Northern Lights 99 kW
Stabilizers	Quantum QC 1800 Zero Speed
Material	Composite
Owner and guests	12
Crew	7
Classification	ABS Maltese Cross A1 Yachting Service AMS
Naval architecture	Delta Design Group
Exterior styling	Espinosa Inc./
	Delta Design Group
Interior space planning	Espinosa Inc./
	Delta Design Group
Interior design	Delta Design Group
Builder / Year	Delta/2007

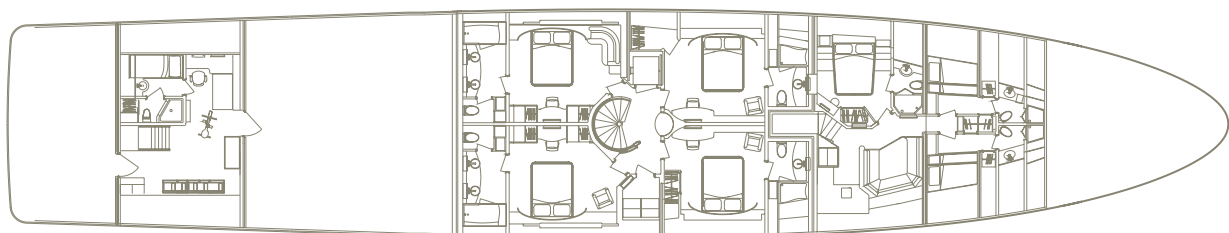
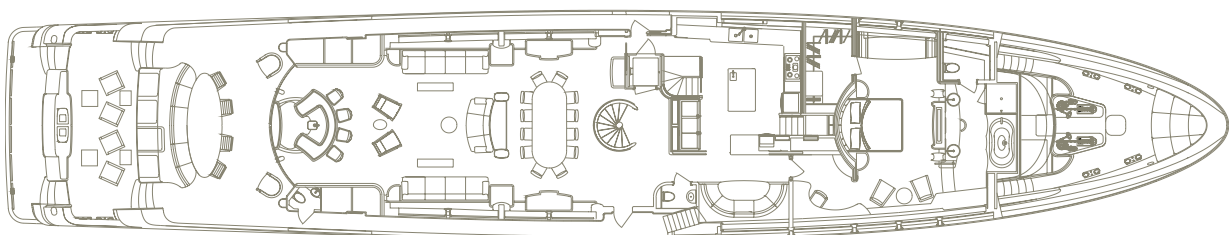
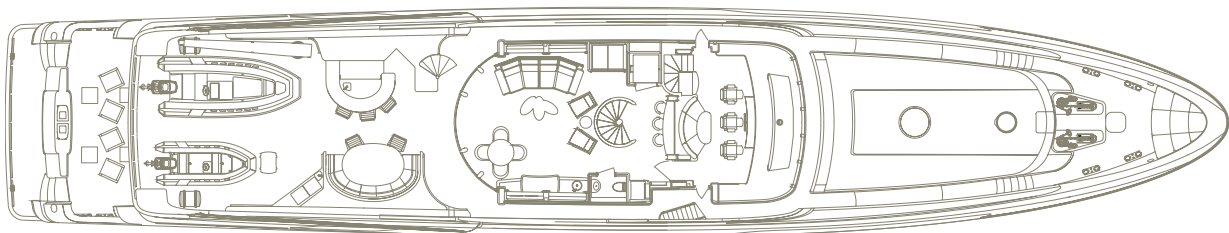
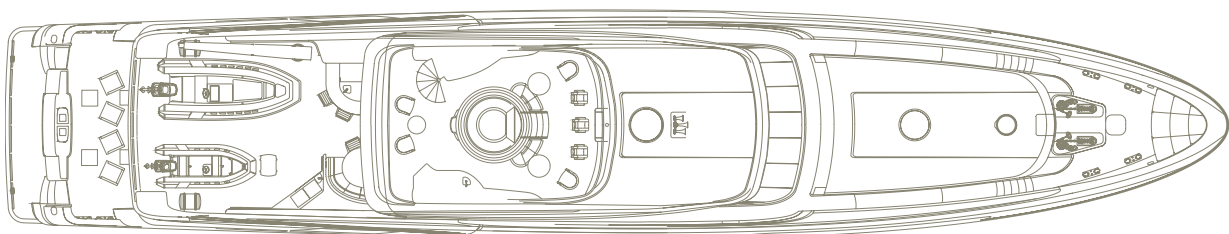
THE BEST BAD GUY IN THE WEST

Who is *Mr. Terrible*? To many of the residents of California, Nevada, Arizona, and Utah he is a moustachioed bandit brandishing a gas pump nozzle in lieu of a six-shooter. The bandit is the logo of the owner's company, Terrible Herbst, and a symbol that graces service stations, casinos and motor sports teams throughout the region.

THE ENGINE ROOM

For those who know the owner's racing background and passion for motor sports, this brilliantly gleaming engine room comes as no surprise. To others, there is nothing that can quite prepare you. At the heart, is a pair of twin MTU high performance engines that were faired and painted post-production to match the owner's racing colors. The engines and gear boxes are soft mounted with an integrated shaft thrust bearing to help reduce sound and vibration throughout the vessel. A highly polished stainless steel fuel delivery system including valve bodies and handles was built out of 316-grade stainless steel with a mirror finish. Both the air inlets and a custom stainless steel sink are adorned with the *Mr. Terrible* logo. To make all of this sparkle and shine even more, the walls and overheads were finished in high gloss aluminum paneling and even the bilges were faired and painted to exterior finish quality. The work space is that of a showroom; light, airy and spacious while at the same time considerate to maintenance, accessibility and operation.





DELTA MARINE 1608 SOUTH 96TH STREET SEATTLE, WASHINGTON 98108 T 206.763.2383 F 206.762.2627 WWW.DELTAMARINE.COM

