



D E L T A

S L O J O

“Our primary focus was singular in vision. Warm water and warm weather thus either side of the equator. *slojo* was designed for outdoor living – breakfast, lunch and dinner.”

| SLOJO'S OWNERS |





INSPIRATION AND COLLABORATION

Every custom yacht aspires to be a reflection of her owners' desires but few are as personal as *slojo*, the 156-foot composite, semi-displacement motoryacht built by Delta. She is a true collaboration between her owners, Delta and Tom Stringer who headlines Tom Stringer Design Partners. Built on a successful Delta hull platform, *slojo* is crafted to be highly maneuverable, long range, shallow draft and – of paramount importance – created for diving.



Delta was tasked to create a yacht that was first and foremost American in appearance. The long classic lines of the flag blue hull are beautifully proportioned, gracefully curved and tastefully restrained from excessive ornamentation. One particularly noteworthy detail – Delta successfully integrated the interior and exterior spaces by focusing on the placement and size of the windows. On *slojo*, large windows run nearly from the floor to the ceiling, providing guests an unobstructed view of the beautiful outdoors.

DAYS BEGIN EARLY ON SLOJO WITH SUNRISE DIVE
PARTIES AND AFTERNOON ADVENTURES EXPLORING
REEFS OR CRUISING IN KAYAKS







OUTDOOR LIVING AT ITS FINEST

DECKS

Step onto the decks of *slojo* and you'll witness a harmonious design scheme as bright as the sun. An abundance of handsome teak furniture is embellished with honey-colored fabrics vividly accented with infusions of red. Each deck was thoughtfully designed to provide the ideal perch for every outdoor pleasure simple to grand. From charming settees and lounge chairs for lazy sun bathing to exquisite formal dining at an inlaid marble table in the twilight splendor, *slojo's* adaptable outdoor spaces are an obvious top priority.



OUTDOOR FURNITURE CAN BE EASILY CONFIGURED
AND SECURED THANKS TO A GRID OF ANCHOR POINTS
ALONG THE TEAK DECKS



THE ULTIMATE AQUATIC LIFE

When *slojo*'s owners first came to Delta, they shared their ultimate purpose: they wanted to take full advantage of life on the water. The solution was simple, yet comprehensive. The cockpit serves as the fishing and diving base with three enormous gear lockers and a dive shop complete with a Nitrox system and professional grade diving equipment. Aft of the sky lounge on the boat deck, two 5,000 pound capacity cranes manage the fleet of watercraft and tenders onboard. Daytime is often spent enjoying high seas fishing adventures, reef diving, excursions to shore, kayaking, paddle boarding and kite surfing. At night, guests have front row seats to watch the sea life thanks to underwater lights that can be aimed in any direction in order to watch the live show.

SLOJO IS A FOODIE'S PARADISE — HENCE ALL THE ONBOARD REFRIGERATORS CONVERT TO FREEZERS FOR LONG DISTANCE PROVISIONING





The aft deck can be easily configured to suit the moment. It can be transformed on the dime to quickly accommodate the moods of the day, and is often the centerpiece for festive gatherings – whether it is soaking up the sun, grand alfresco dining, moonlight dancing or simply retelling the adventures of the day over post-dive cocktails.

“*slojo* is a clear and concise expression of the owner’s desire to build a yacht of lasting quality and timeless design, capable of traveling the far reaches of the world in their own style and at their own pace.”

| TOM STRINGER |

INSPIRE





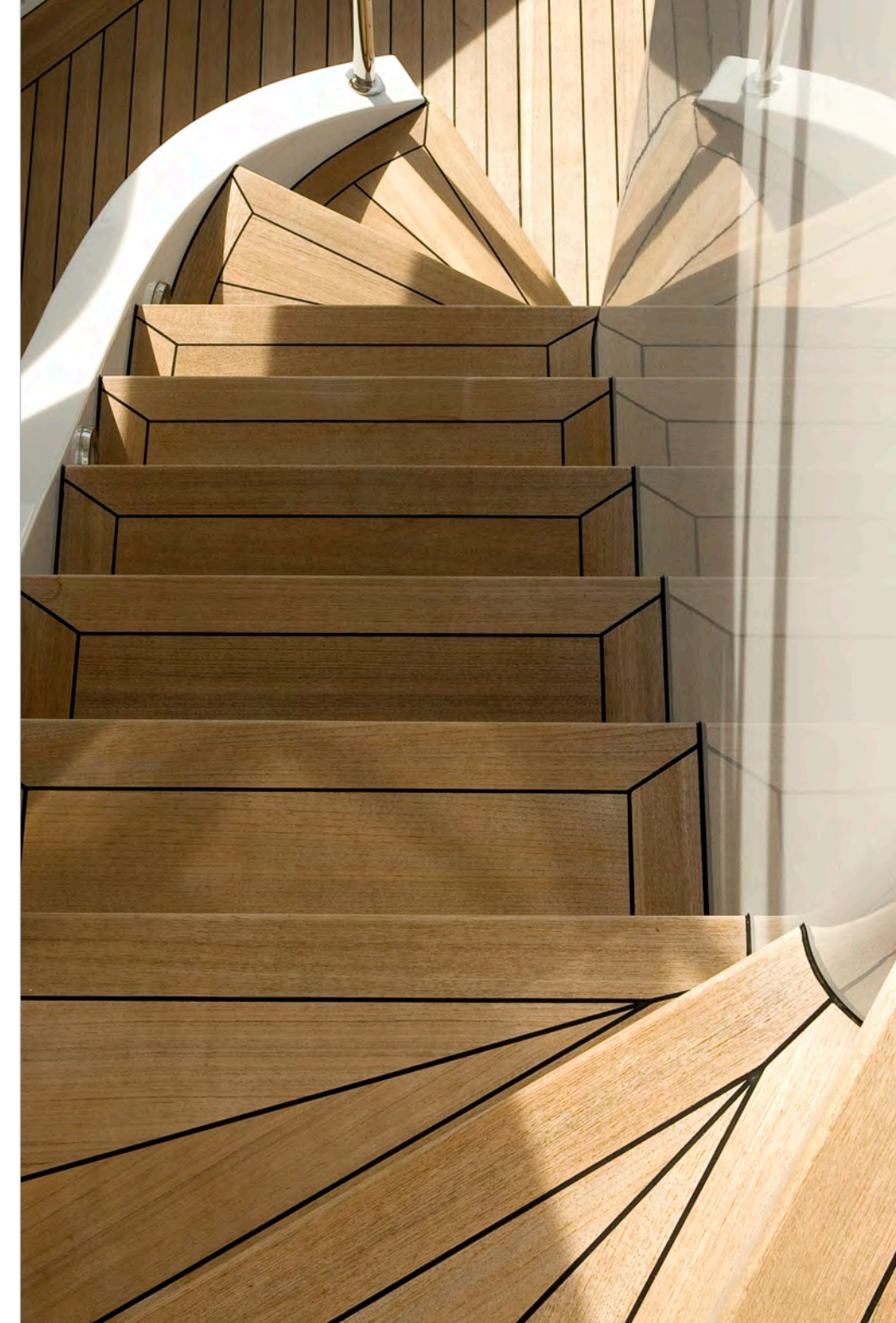
TAKE IT OUTSIDE

Many days and nights aboard *slojo*, the outdoor decks are the preferred settings for living and entertaining. After sundown, festive stainless steel tiki torch lamps can be installed to bring on the calypso fun. Lest you think the action never stops aboard *slojo*, it is important to note this yacht sports an impressive collection of napping spots. Settees, lounges, sofas and sun pads – the cozy accommodations aboard *slojo* make downtime a delight.



Many of *slojo*'s most spirited gatherings take place on the sundeck; it is thought of as the yacht's 'sweet spot' and rightly so as it is thoroughly equipped for supreme pleasure. Featured on this veranda are fiber canopies that come in two sheer weights and stretch the breadth and width of the deck to provide the optimal amount of sun or shade. Furnished with a full service wet bar and barbeque grill, the sundeck is always primed for impromptu outdoor dining and sunset cocktails. Forward is an oversized hot tub great for soaking tired muscles after a day conquering kite boards, the ideal happy hour locale or the perfect, private open-air spa.

A STAIRCASE LEADS TO THE BOAT
DECK WHERE TREADMILLS PROVIDE AN
OPPORTUNITY FOR AN INSPIRED WORKOUT
WHILE ENJOYING THE SCENERY



TRUE BEAUTY IN THE NATURAL WORLD IS DEVOID OF PRETENSE

DESIGN

Such can be said about the interior of *slojo* – it has nothing to prove but exists only to delight. Step inside and you'll find transporting spaces brimming with natural light, brilliant woods, and rich textures. Guests can bask in the golden-hued spell provided by the skillful play of Walnut, Teak, Anigre and Mozambique intermixed with the textures of leather and woven horsehair. Nicely juxtaposed accents of brushed nickel add visual detail in the joinery and hardware. It is the perfect backdrop for the owners' eclectic art collection – an inspired treasury from around the world that is as rare as it is fascinating.

THE CUSTOM CARPETS ARE AN INTERPRETATION OF GEOMETRIC AFRICAN THEMES

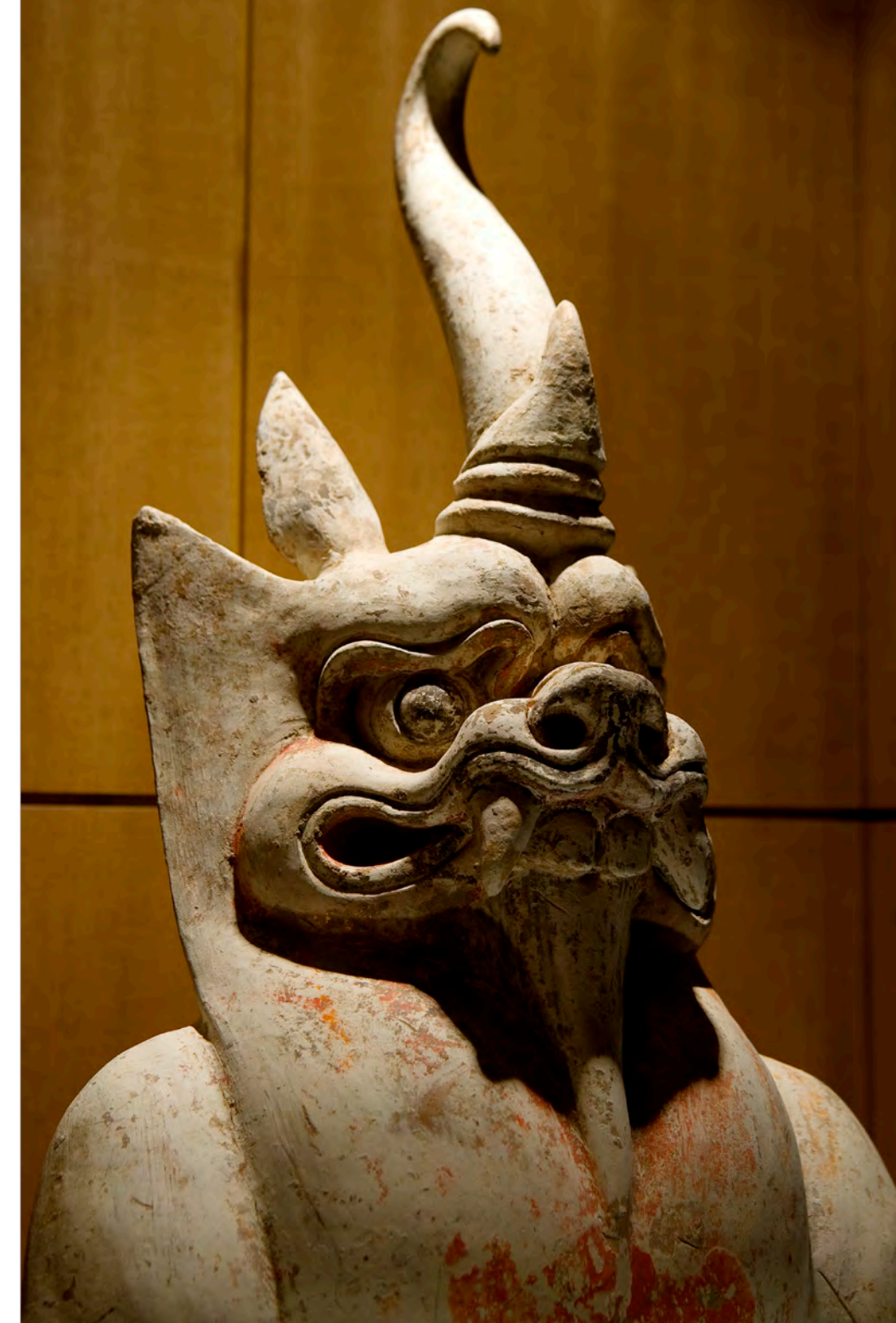




ON SLOJO, FRIENDS COME FIRST

slojo's owners are consummate travelers, divers and entertainers; when it comes to travel and adventure, it always includes their closest friends. Interior designer Tom Stringer happens to be one of them. In order to create the perfect yacht to suit their lifestyle, Stringer accompanied them on many a journey to some of their favorite destinations. Together they set out to experience a variety of different kinds of yachts firsthand. They worked together wonderfully, and closely, to perfect the vision of the kind of vessel they wanted – and it shows. Beautiful and inviting, formidable and celebratory, *slojo* is the embodiment of a thoughtfully crafted work of art.

NINTH CENTURY CHINESE TEMPLE DOGS STAND
GUARD AT THE ENTRY TO THE MAIN SALON





A wall of leather lined, illuminated art cells separate the main salon from the dining area. These provide the perfect canvas for the constantly evolving art collection, objects sentimental and rare, from artisan handiwork to precious antiques. Throughout *slojo*, a world of discovery awaits in pieces such as African Zulu and Chamba culture, Oceanic shell money, or a 19th Century Tibetan tantric crown of silver mounted with turquoise and carnelian. It helps tell those aboard the owners' cherished stories of their many travels throughout the world.



GRACIOUSLY ENTERTAINING

The gathering spaces on *slojo* are designed for intimate, friendly gatherings – not as a reception hall for grand events. One of the subtle yet personal touches throughout the yacht is an elliptical pattern that can be seen in many of the wood inlays including the custom dining table. The subtext these shapes communicate is that all things are cyclical and connected and that, ultimately, life springs eternal from the ageless ocean. In all of her interior spaces, the use of native materials and luminous woods provide warmth, tone and texture; large windows provide glorious natural light and bring the scenery indoors. The overall impression is wonderfully elegant without being imposing.

TEXTILES WERE SELECTED TO COMPLEMENT THE
ETHNOGRAPHIC ART COLLECTION FROM AFRICA,
ASIAN AND OCEANIA



“We asked our designers to make it livable rather than untouchable. Where bathing suits and towels are perfectly acceptable attire and thus they designed accordingly.”

| SLOJO'S OWNERS |

RETREAT





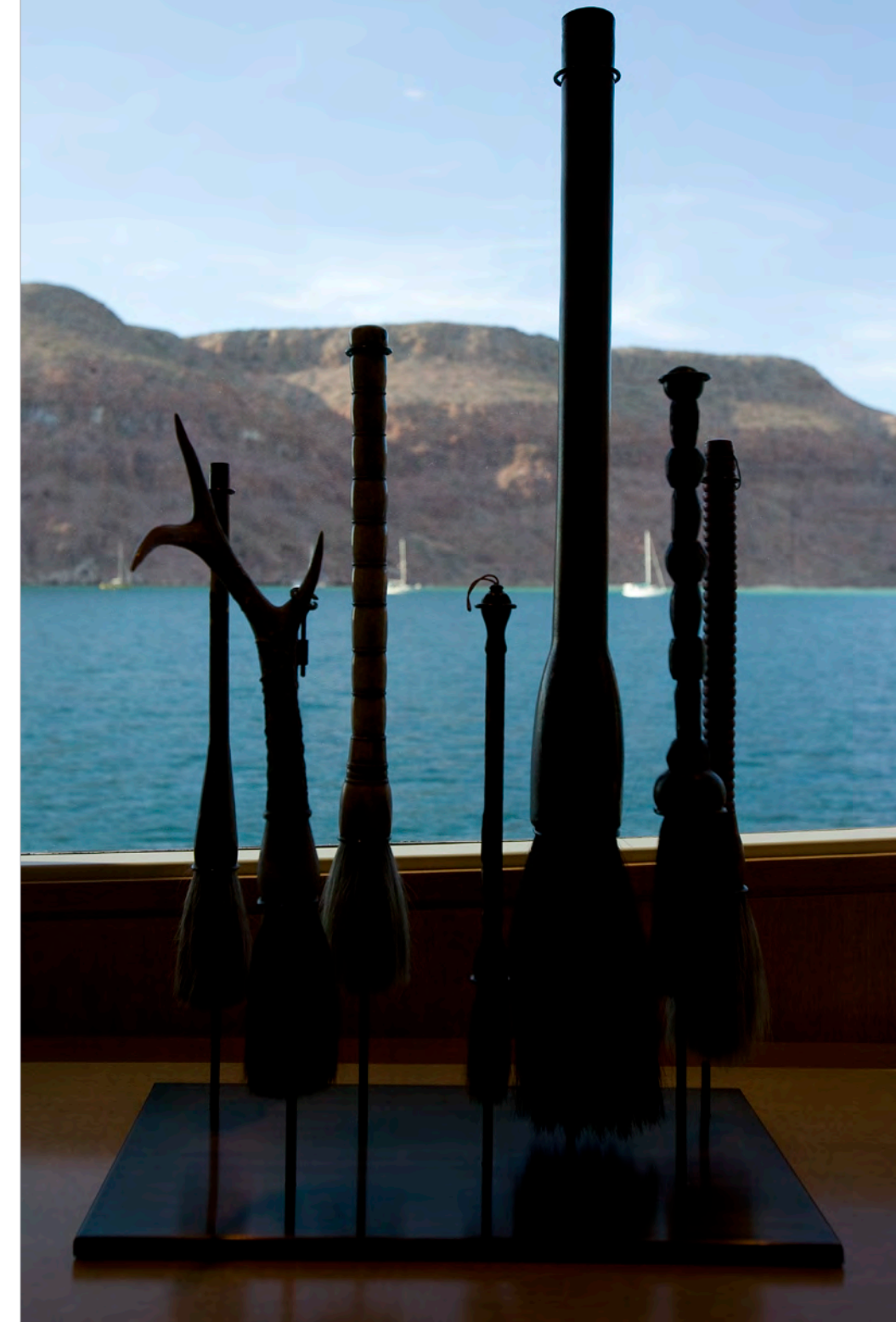
LIFE ABOARD SLOJO IS ABOUT BALANCE

Step inside the master suite and you'll soon discover the perfect oasis. At the entrance is a service space with a wet bar decorated with 19th century Chinese panels. Inside, the suite is spacious and airy, supremely luxurious, yes, but ultimately relaxing. Large windows allow for private enjoyment of sunrises and sunsets while bringing natural ambiance to the interior spaces. Thoughtful details abound, including a wall of leather upholstered doors that supply ample storage space without intruding upon the harmonious décor.



Prepping for day or night is a delight inside the master bath. A graceful his-and-her head is awash with natural light from skylights. Elegant limestone flooring, countertops and sinks surround the room with beautiful, functional luxury. The focal point of this placid space is a dramatic backdrop of Onice Fantastico stone, creating the aura of a private, heavenly spa with a kaleidoscope of warm, rich and soothing earth tones.

THE ARTWORK ONBOARD IS EVER CHANGING, REFLECTING THE OWNERS' PASSION FOR INVESTIGATING AND LEARNING ABOUT THE PLACES THEY TRAVEL





ON SLOJO, EVERYONE'S A VIP

SUITES

Another example of the jovial lack of pretense aboard *slojo* can be witnessed in the four staterooms. By request there is no VIP suite. Instead, the rooms each feature an individualized design motif and are distinguished by the sizes of their beds rather than any kind of hierarchy. All of the head walls feature mounted frames for photographs that can be switched out on occasion to celebrate and spotlight *slojo*'s ongoing adventures.



A CEREMONIAL SHIELD FROM THE ASMAT CULTURE IN NEW GUINEA, DATING BACK TO THE VERY EARLY PART OF THE 20TH CENTURY, WELCOMES GUESTS TO THEIR ROOMS



First and foremost, the goal of *slojo* was to create a welcoming vacation home on the water – not a floating hotel. It is a true getaway, and in every way a personal retreat. While the pace aboard *slojo* can often be anything but slow, rest and relaxation are a major priority as well. Every comfort and detail was considered in order to create a yacht that is as dynamic as it is peaceful.

SLOJO'S MAGNIFICENT CENTER STAIRCASE FEATURES
A ONE PIECE STEAM BENT TEAK RAIL THAT TRAVELS
THE ENTIRE THREE LEVELS





A PLACE TO FEEL AT HOME

The skylounge has the warm familiarity of a favorite neighborhood bar, with dark Mozambique paneling, cozy furnishings of cognac leather and spirited saffron accents. It is the perfect spot for playing games, cards and enjoying relaxed conversation. Movable bar stools can be affixed to the foot rail in case of inclement weather, ensuring the fun doesn't stop even if it you have to bring it inside.

Cum sagna consequam ilde lute dit atiiuaer irili quatisit
conulla core doie exerosto iquisse ndion qagna facilit, core
venit lreet ilit del et ip exer ing et nullaor tionsent praese tat.

| CRISTINA TOPHAM, CHEF |

SENSES





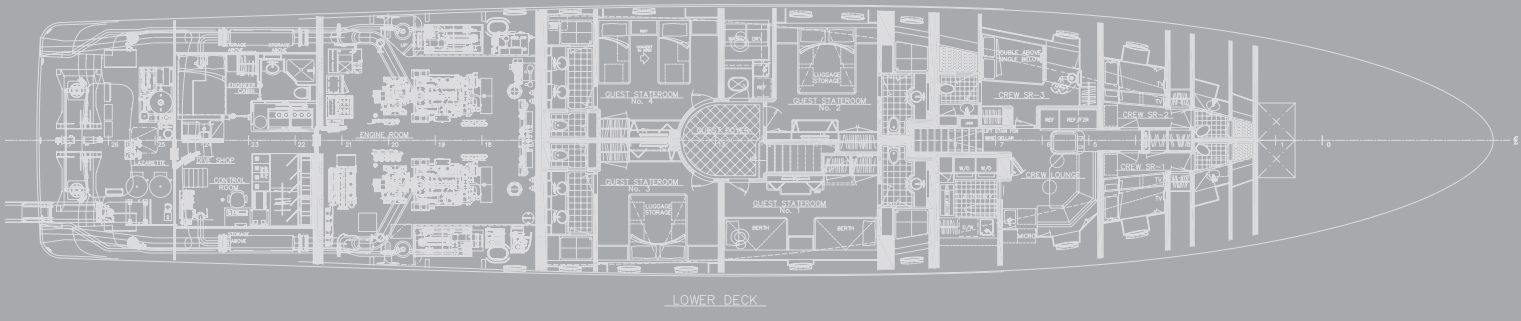
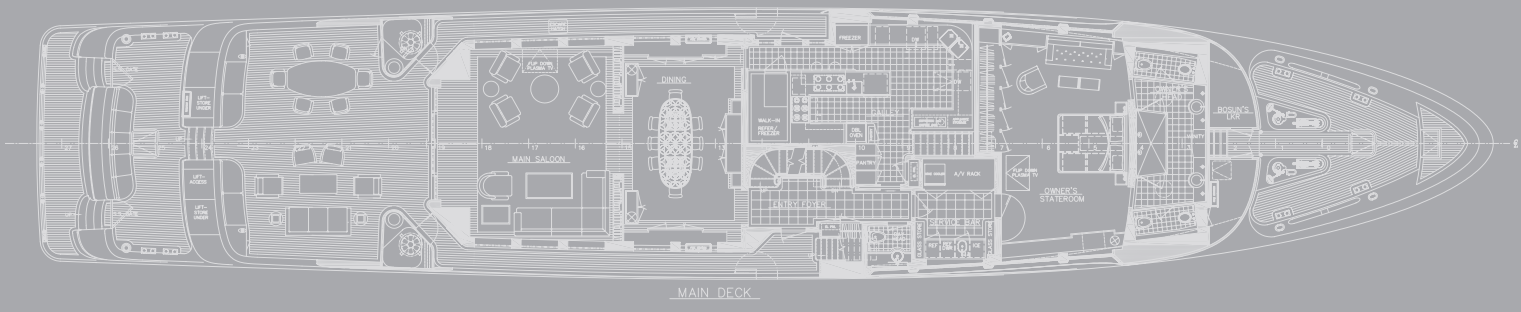
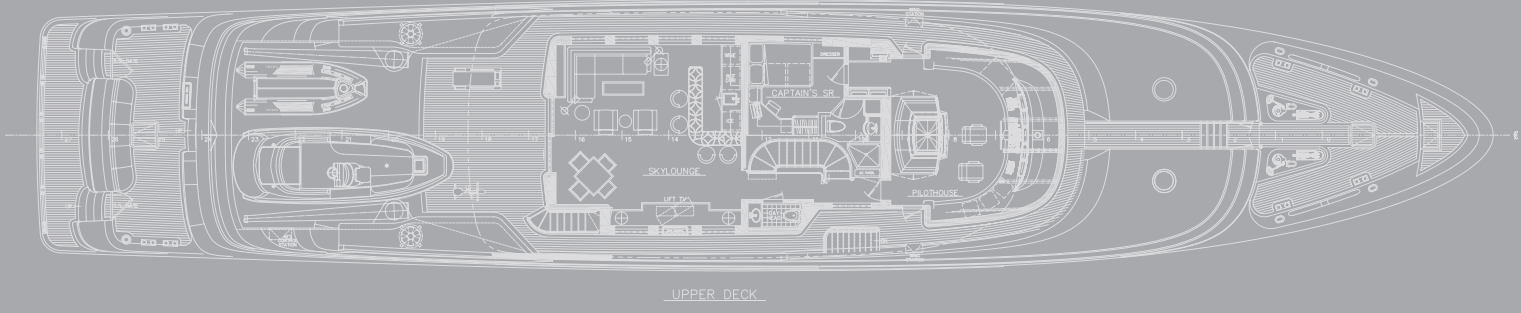
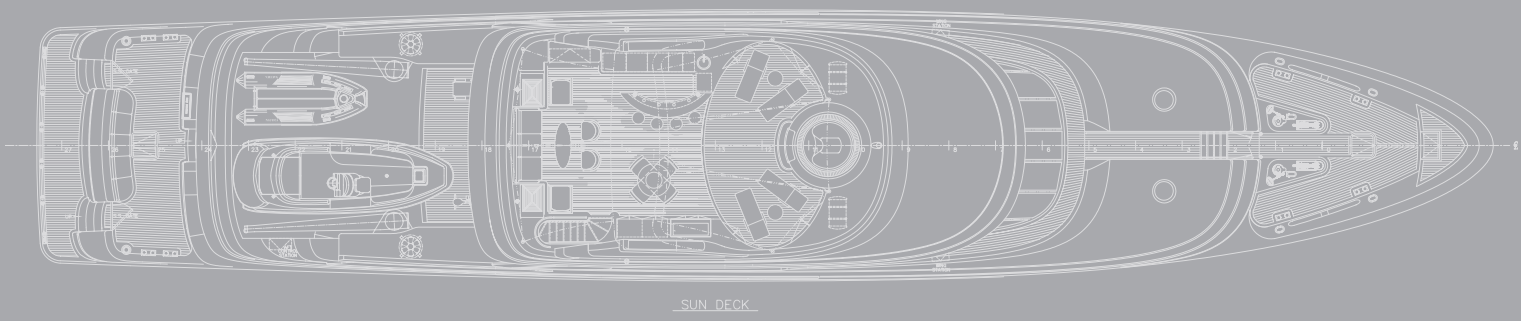
LIFE ONBOARD IS A MOVEABLE FEAST

The galley is a gourmet's paradise, with the workspace and equipment of a professional-grade kitchen replete with stainless steel countertops and backsplashes but made intimate with beautiful teak cabinetry and natural light. Every amenity, from a Pacojet ice cream maker to a Cryovac sous-vide system is at the ready for culinary enjoyment. One of *slojo's* owners is a consummate cook; she loves to prepare meals for friends and entertain while doing so, inspiring the galley to be a fully functional and deliciously adapt gathering space.





LOA	156' / 47.6 meters
LWL	138' 10" / 42 meters
Beam	28' 8" / 8.7 (molded)
	29' 8" / 9 meters (extreme)
Draft	8' / 2.4 meters (full load)
	7' - 6" / 2.3 meters (half load)
Displacement	391 long tons (full load)
	369 long tons (half load)
Engines	2 x CAT 3508B
	1,300 BHp @ 1,835 rpm
Speed	16 knots
Cruise	15 knots
Fuel capacity	14,870 gallons / 56,290 liters
Range	3,400 nautical miles @ 12 knots
Fresh water capacity	2,470 gallons / 9,350 liters
Generators	(2) Northern Lights 99 kW
Stabilizers	Quantum QC 1800 Zero Speed
Material	Composite
Owner and guests	10
Crew	10
Classification	Lloyd's Register Maltese Cross
	100 A1 SSC Yacht Mono G6 MCH
Naval architecture	Delta Design Group
Exterior styling	Delta Design Group
Interior space planning	Delta Design Group
Interior design	Tom Stringer Design Partners
Builder / Year	Delta / 2008





DELTA MARINE 1608 SOUTH 96TH STREET SEATTLE, WASHINGTON 98108 T 206.763.2383 F 206.762.2627 WWW.DELTAMARINE.COM